



13 Litchfield Avenue North Kellyville NSW

5 3 2

Built in late 2016, this near-new contemporary family home has an expansive open plan layout, offering quality fittings and inclusions and located in a sought-after pocket of North Kellyville.

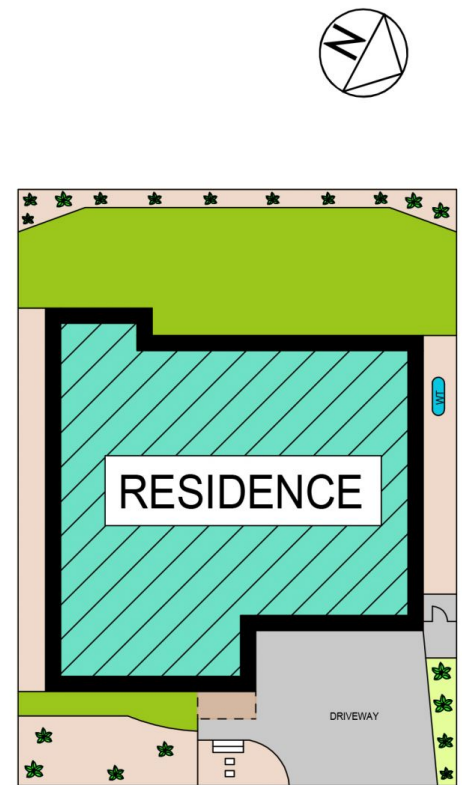
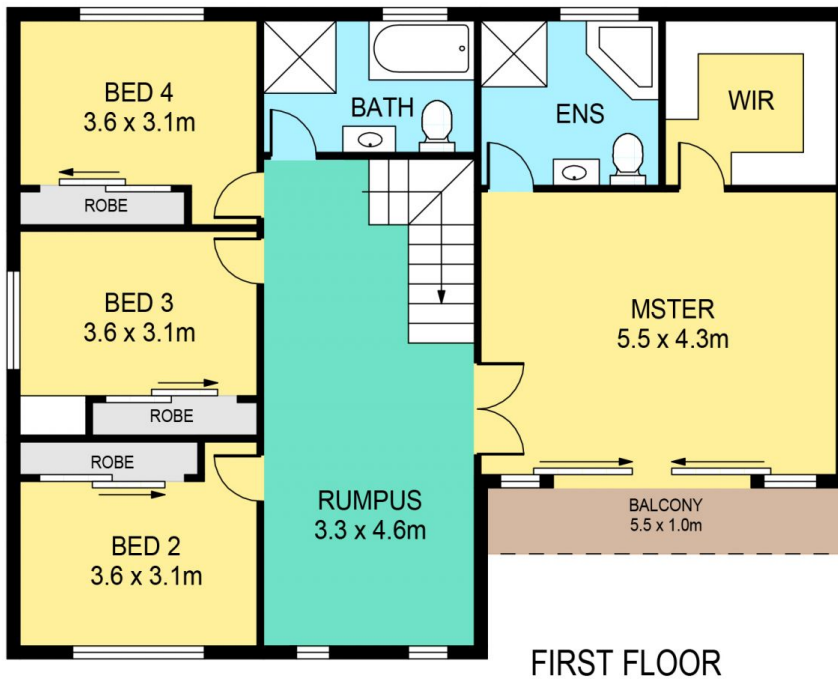
Price : \$ 1,020,000
Land Size : 360 sqm
View : <https://www.theavenuerealestate.com.au/4802558>

Featuring:

- Spacious kitchen with waterfall Caesarstone benchtops, stainless steel appliances and generous walk-in pantry
- Light-filled open plan lounge and dining room leading out to the undercover alfresco area
- Expansive Master suite with double sliding doors to private balcony, large walk in robe and ensuite bathroom with corner bathtub
- Three more generous upstairs bedrooms, all with built in robes, plus 5th bedroom downstairs with additional bathroom
- Upstairs rumpus room, perfect for a kids or adults retreat



Chris De Celis
02 9634 3444



13 LITCHFIELD AVENUE, KELLYVILLE

DISCLAIMER:

PLANS SHOWN ARE FOR MARKETING PURPOSES ONLY, ALL DIMENSIONS ARE APPROXIMATE AND NOT TO SCALE. THEY ARE SUBJECT TO ERRORS AND INACCURACIES AND NO LIABILITY WILL BE ACCEPTED. INTERESTED PARTIES SHOULD MAKE THEIR OWN INQUIRES.