



5/5 Spurway Drive Norwest NSW

2 1 1

If you favour the luxury lifestyle off the course as well as you do on it, you will love with this Near New ground floor apartment adjacent to the rolling greens of the championship Castle Hill Country Club. Situated in Castle Pines, one of the Hill's most desirable Over 55's Strata complex.

Featuring:

- Modern light-filled interior
- Gourmet gas kitchen with stone bench tops and quality European appliances
- Beautifully appointed bathroom
- 2 bedrooms, both with built in wardrobes
- Generous alfresco area with grassed courtyard
- Single car space with internal lift access
- Clubhouse with swimming pool, tennis court and social

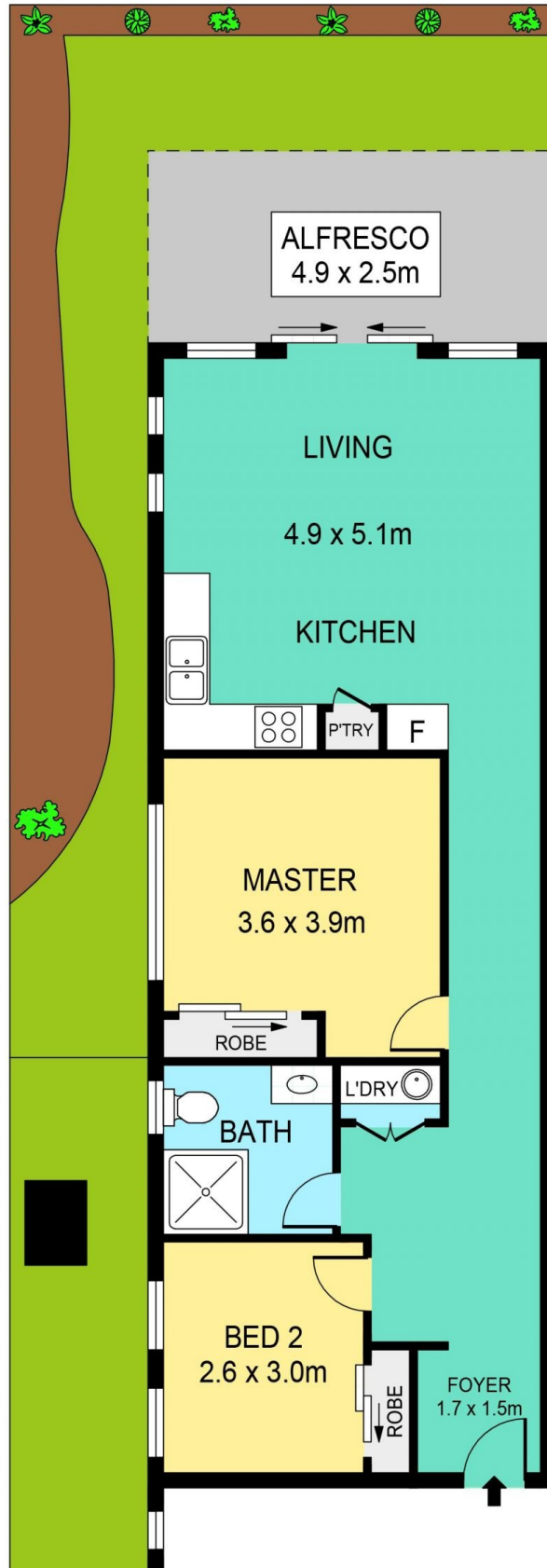
View : <https://www.theavenuerealestate.com.au/4802559>



Steve Cole
02 9634 3444



Chris De Celis
02 9634 3444



5/5 SPURWAY DRIVE, BAULKHAM HILLS

INTERNAL 74m²
TERRACE 12m²
COURTYARD 82m²

DISCLAIMER:

PLANS SHOWN ARE FOR MARKETING PURPOSES ONLY, ALL DIMENSIONS ARE APPROXIMATE AND NOT TO SCALE. THEY ARE SUBJECT TO ERRORS AND INACCURACIES AND NO LIABILITY WILL BE ACCEPTED. INTERESTED PARTIES SHOULD MAKE THEIR OWN INQUIRIES.