



## 22 Nambung Street Kellyville NSW

5 2 2

This luxurious family home offers the ultimate blend of stylish contemporary living with meticulous attention to detail. Located in a highly sought-after area of North Kellyville, amongst other quality homes & being conveniently accessible to North Kellyville Shopping Square, Rouse Hill Town Centre, city express bus stops, premier schools and the future Rouse Hill Train Station, this magnificent property has everything a discerning, luxury buyer could hope for!

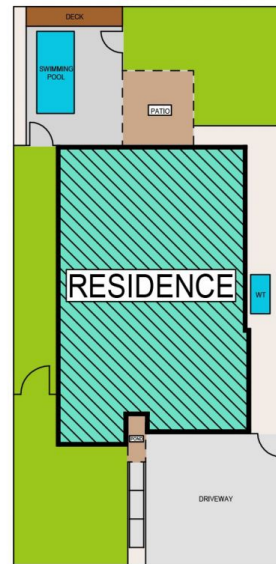
Features include:

- Entertainers kitchen with waterfall stone island bench top, quality European Ilve & Bosh stainless steel appliances , 900mm gas cooktop/oven, loads of storage cupboards & a huge butlers pantry
- Large living and dining room conveniently located off the

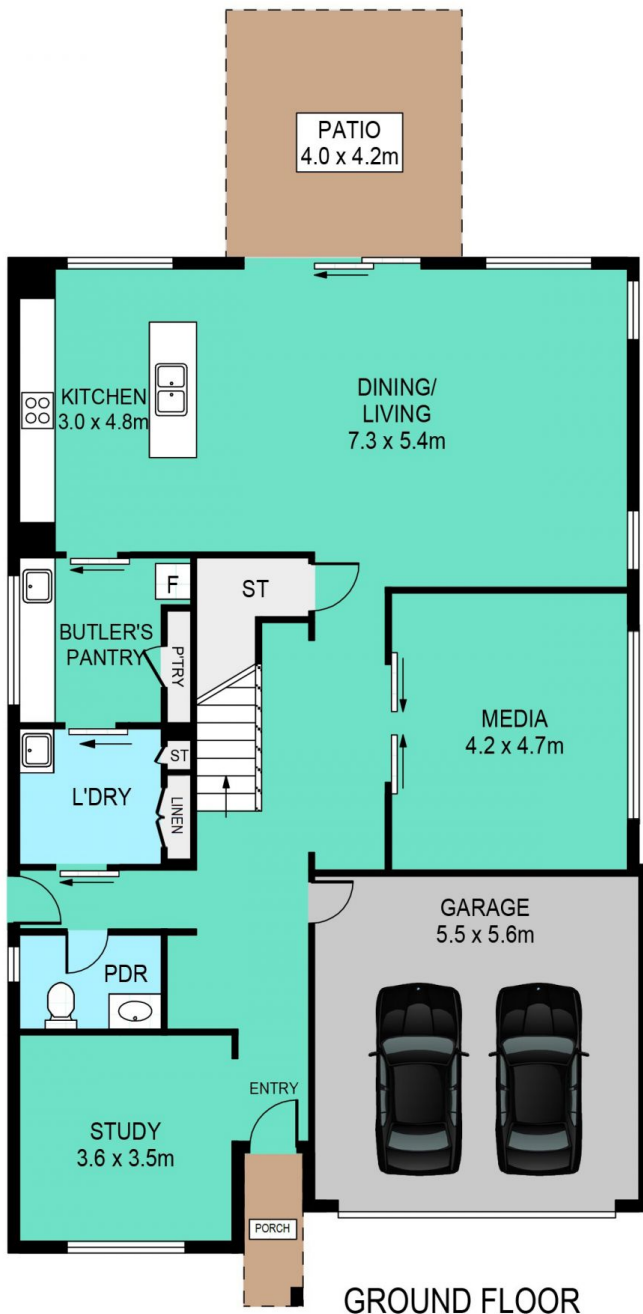
**Price** : \$ 1,350,000  
**Land Size** : 450 sqm  
**View** : <https://www.theavenuerealestate.com.au/4813596>



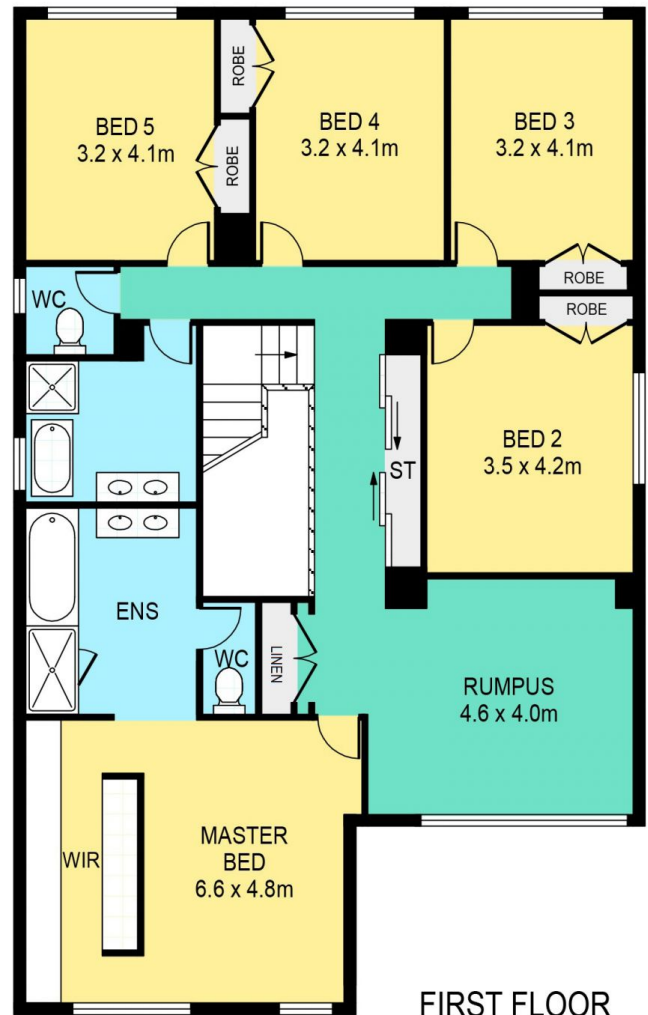
**Chris De Celis**  
**02 9634 3444**



SITE PLAN



GROUND FLOOR



FIRST FLOOR

## 22 NAMBUNG STREET, KELLYVILLE

### DISCLAIMER:

PLANS SHOWN ARE FOR MARKETING PURPOSES ONLY. ALL DIMENSIONS ARE APPROXIMATE AND NOT TO SCALE. THEY ARE SUBJECT TO ERRORS AND INACCURACIES AND NO LIABILITY WILL BE ACCEPTED. INTERESTED PARTIES SHOULD MAKE THEIR OWN INQUIRES.