



9 Radcliffe Place Kellyville NSW

5 2 2

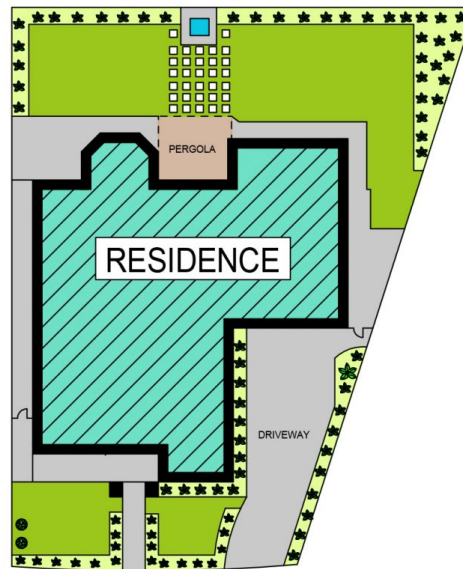
Located in a quiet cul-de-sac and positioned on a 600 sqm parcel of land is this beautifully presented 44 square Clarendon home in the heart of Kellyville. This superb residence is walking distance to the local shopping village, Kellyville primary and Kellyville high school, reserves and upcoming railway stations at Kellyville and Showground Rd.

- Caesarstone kitchen with Smeg appliances and gas cooking
- Well-appointed king-sized master with walk in dressing room and en-suite bathroom with spa
- Multiple living and dining areas with a seamless flow out to the undercover pergola and courtyard
- Generous level lawn with private garden and water feature
- Floor to ceiling windows with plantation shutters

Building Size : 408.77 sqm
Land Size : 600 sqm
View : <https://www.theavenuerealestate.com.au/4813657>



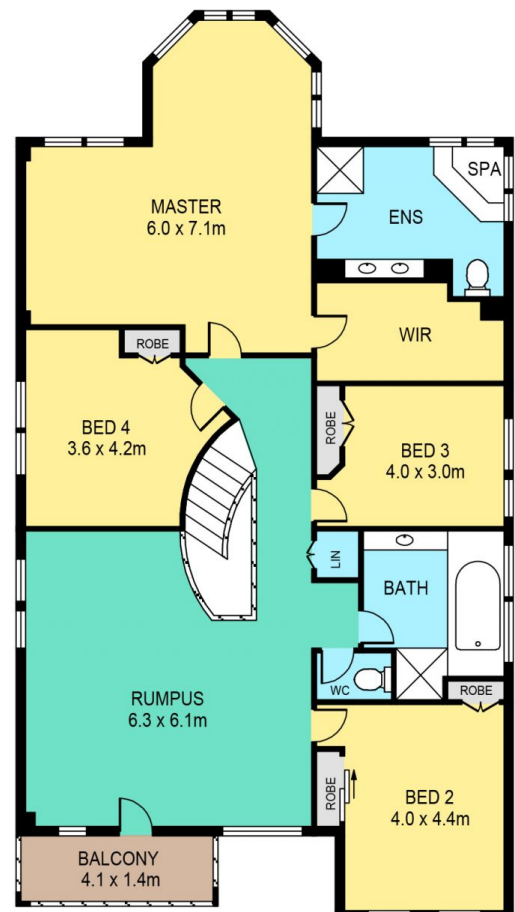
Chris De Celis
02 9634 3444



SITE PLAN



GROUND FLOOR



FIRST FLOOR

9 RADCLIFFE PLACE, KELLYVILLE

DISCLAIMER:

PLANS SHOWN ARE FOR MARKETING PURPOSES ONLY, ALL DIMENSIONS ARE APPROXIMATE AND NOT TO SCALE. THEY ARE SUBJECT TO ERRORS AND INACCURACIES AND NO LIABILITY WILL BE ACCEPTED. INTERESTED PARTIES SHOULD MAKE THEIR OWN INQUIRIES.