



164 Caroline Chisholm Drive Winston Hills NSW

4 2 2

Positioned on a 607sqm block and with a charming façade is this classic family home. A generous and open plan layout allows for easy entertaining with family and friends while the location is enviable and within walking distance to many local amenities and public transport options.

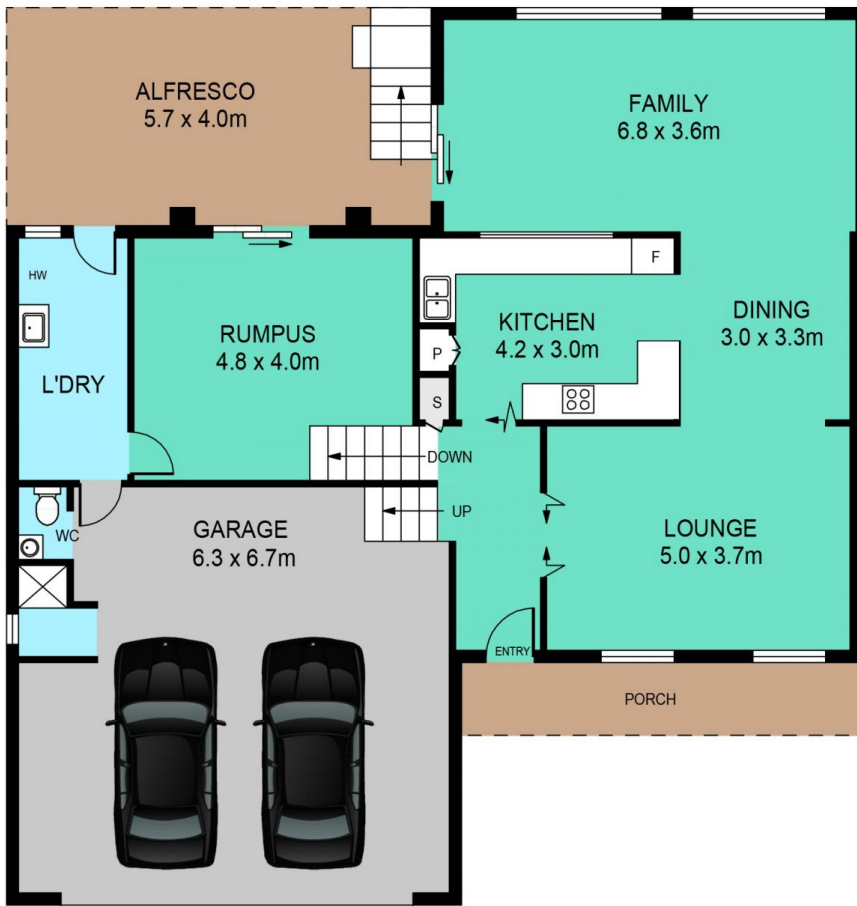
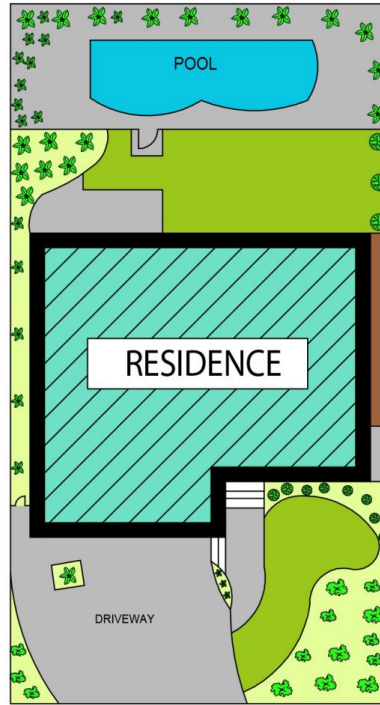
Price : \$ 1,065,000
Land Size : 607 sqm
View : <https://www.theavenuerealestate.com.au/4813659>

Featuring:

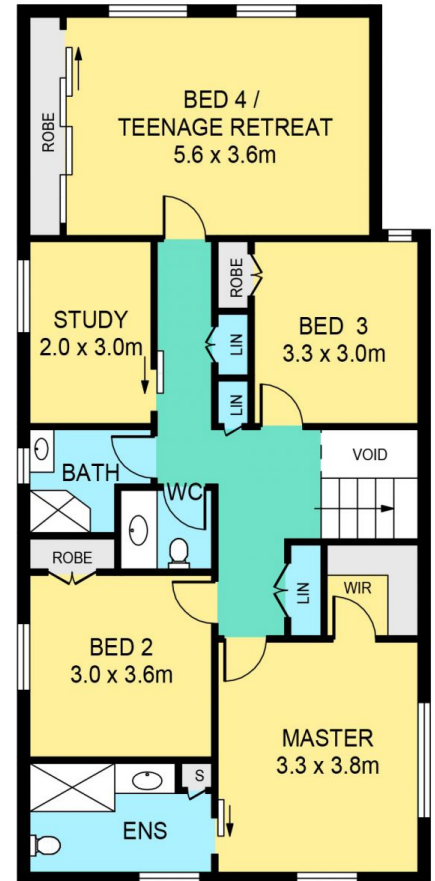
- Neat and tidy kitchen with gas cooking, stainless steel appliances and ample cupboard space
- Flexible split-level floor-plan with a selection of living and entertaining spaces
- Large master bedroom with walk in robe and ensuite bathroom
- Three other generous bedrooms plus upstairs study and family bathroom
- Undercover alfresco area, ideal for entertaining



Chris De Celis
02 9634 3444



GROUND FLOOR



FIRST FLOOR

164 CAROLINE CHISOLM DRIVE, WINSTON HILLS

DISCLAIMER:

PLANS SHOWN ARE FOR MARKETING PURPOSES ONLY. ALL DIMENSIONS ARE APPROXIMATE AND NOT TO SCALE. THEY ARE SUBJECT TO ERRORS AND INACCURACIES AND NO LIABILITY WILL BE ACCEPTED. INTERESTED PARTIES SHOULD MAKE THEIR OWN INQUIRES.