



1405/91B Bridge Road Westmead NSW

2 2 1

Conveniently positioned within walking distance to Westmead Station and Westmead Hospital is this well presented two bedroom unit in the "Monarco Towers" complex. Presenting a great opportunity for investors with strong rental yields in Westmead or those looking to buy into the Sydney property market.

Featuring:

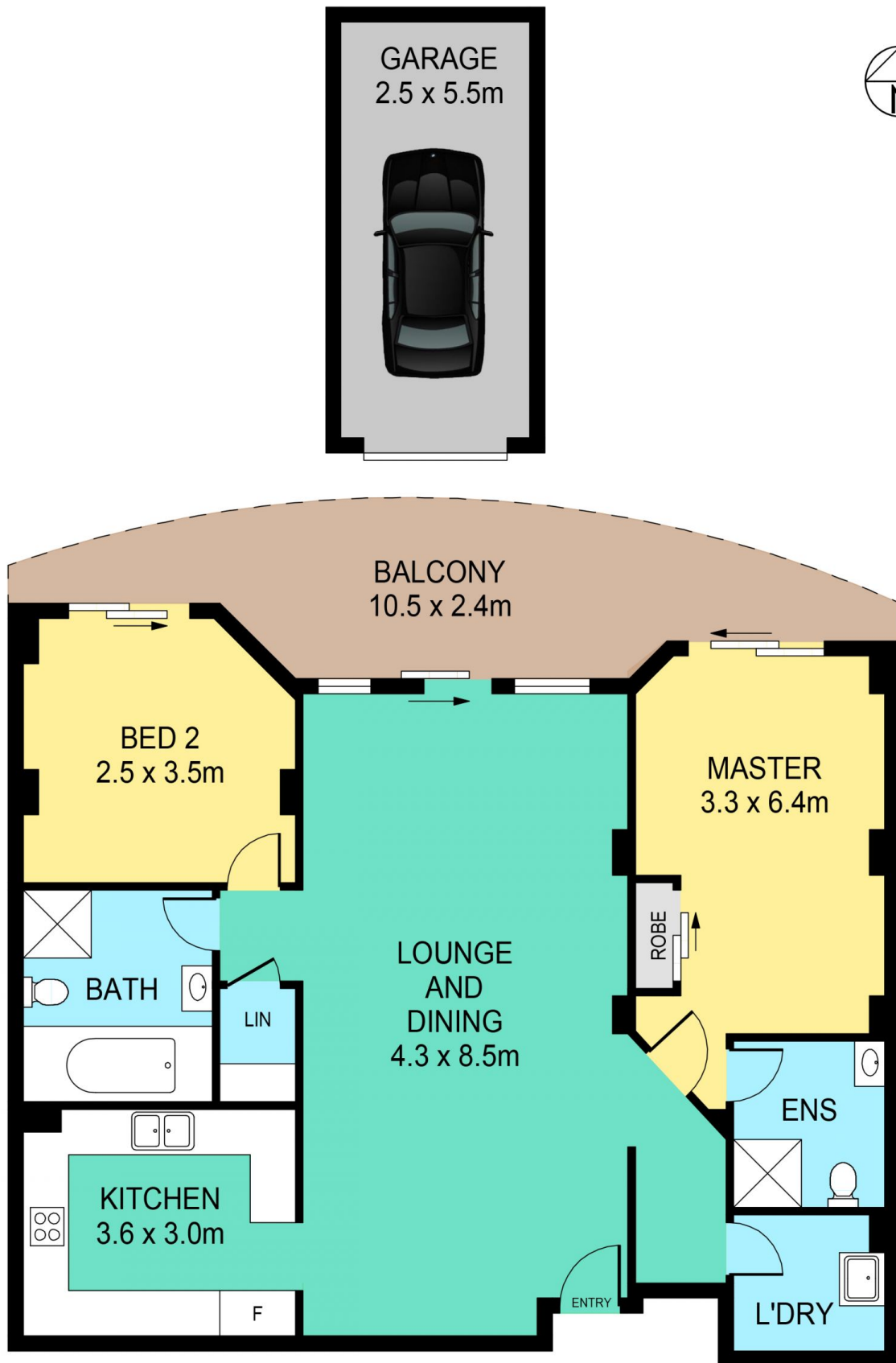
- Master bedroom with generous proportions that could easily fit a study desk, plus ensuite bathroom
- Second bedroom with access to the full balcony
- Open plan lounge and dining room with updated flooring and sliding doors to the balcony with city views
- Modern kitchen with stainless steel appliances and plenty of cupboard space
- Full bathroom with separate bath and shower, plus

Price : \$ 590,000

View : <https://www.theavenuerealestate.com.au/4813662>



Chris De Celis
02 9634 3444



1405/91B BRIDGE ROAD, WESTMEAD

DISCLAIMER:

PLANS SHOWN ARE FOR MARKETING PURPOSES ONLY, ALL DIMENSIONS ARE APPROXIMATE AND NOT TO SCALE. THEY ARE SUBJECT TO ERRORS AND INACCURACIES AND NO LIABILITY WILL BE ACCEPTED. INTERESTED PARTIES SHOULD MAKE THEIR OWN INQUIRES.

THE
AVENUE
REAL ESTATE