



## 27 Emlyn Place Beaumont Hills NSW

5 3 2

Prominently positioned on a generous 600sqm block at the top of a whisper quiet cul-de-sac, is this impressive family home. Cleverly integrating spacious in/outdoor entertaining areas, this residence is guaranteed to impress. With a balance of sophisticated contemporary style and enhanced functionality, it a lifestyle that is often sought but rarely found.

### Featuring:

- ? Large kitchen with stone benchtops, gas cooktop, ample cupboard space overlooking the family meals area
- ? Master bedroom includes walk in robe and double shower ensuite
- ? Three additional bedrooms upstairs, all with built in robes plus second bedroom with ensuite bathroom
- ? Downstairs guest bedroom

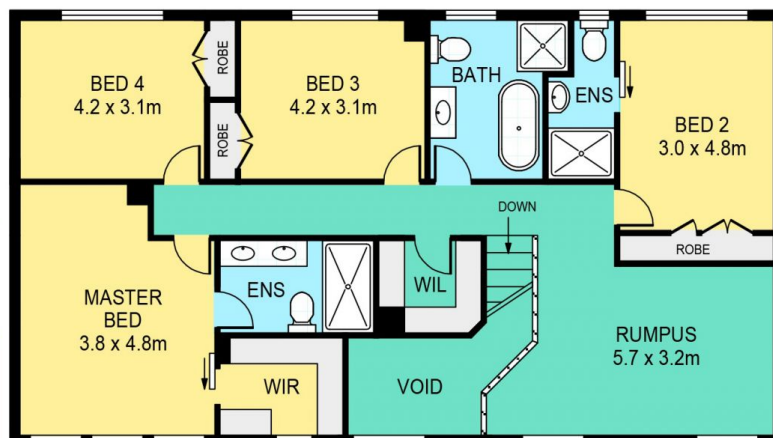
**Price** : \$ 1,400,000  
**Land Size** : 600 sqm  
**View** : <https://www.theavenuerealestate.com.au/4813690>



**Steve Cole**  
02 9634 3444



SITE PLAN



FIRST FLOOR



GROUND FLOOR

## 27 EMLYN PLACE, BEAUMONT HILLS

**DISCLAIMER:**

PLANS SHOWN ARE FOR MARKETING PURPOSES ONLY, ALL DIMENSIONS ARE APPROXIMATE AND NOT TO SCALE. THEY ARE SUBJECT TO ERRORS AND INACCURACIES AND NO LIABILITY WILL BE ACCEPTED. INTERESTED PARTIES SHOULD MAKE THEIR OWN INQUIRES.

**THE**  
**AVENUE**  
REAL ESTATE