



30 Coral Crescent Kellyville NSW

3 2 2

Opportunity awaits you in a highly sought Kellyville Village setting. This single level home is advantageously positioned on a generous 697sqm parcel of land and being within walking distance to Kellyville Plaza, primary and secondary schools, local parks and public transport, you will be impressed with the quality and finishes it has to offer.

Price : \$ 944,000
Land Size : 697 sqm
View : <https://www.theavenurealestate.com.au/4813695>

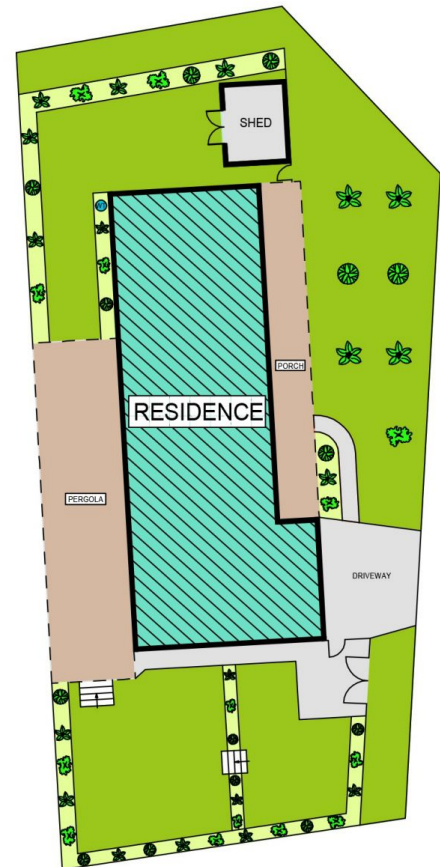
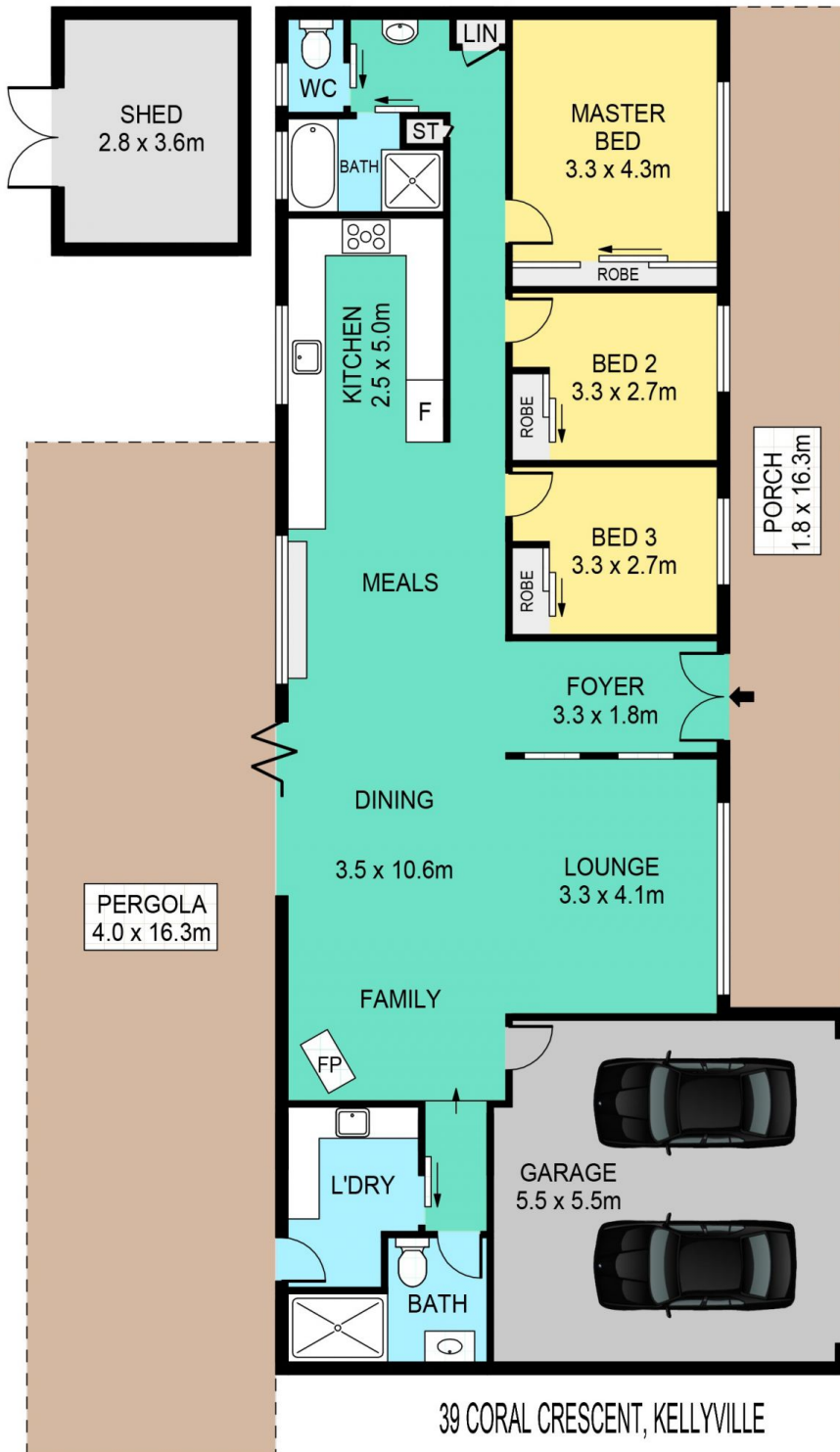
Boasting a renovated quality kitchen and a phenomenal quality bathroom there is nothing for you to do except move in and enjoy!

Other features include:

- Three spacious bedrooms all with built-in wardrobes
- Large family living room with majestic fireplace, perfect for those cold winter nights



Chris De Celis
02 9634 3444



30 CORAL CRESCENT, KELLYVILLE

DISCLAIMER:

PLANS SHOWN ARE FOR MARKETING PURPOSES ONLY, ALL DIMENSIONS ARE APPROXIMATE AND NOT TO SCALE. THEY ARE SUBJECT TO ERRORS AND INACCURACIES AND NO LIABILITY WILL BE ACCEPTED. INTERESTED PARTIES SHOULD MAKE THEIR OWN INQUIRES.