

8 Lycett Avenue Kellyville NSW

4 2 1

Located in a peaceful family friendly street in the highly sought after Elizabeth McArthur Estate is this beautiful single level home offering comfortable modern living with attention to detail. Being within close proximity to local shops including Kellyville Plaza & Rouse Hill Town Centre, local parks, & within walking distance to the upcoming future Kellyville Train Station this property is a must see on Saturday!

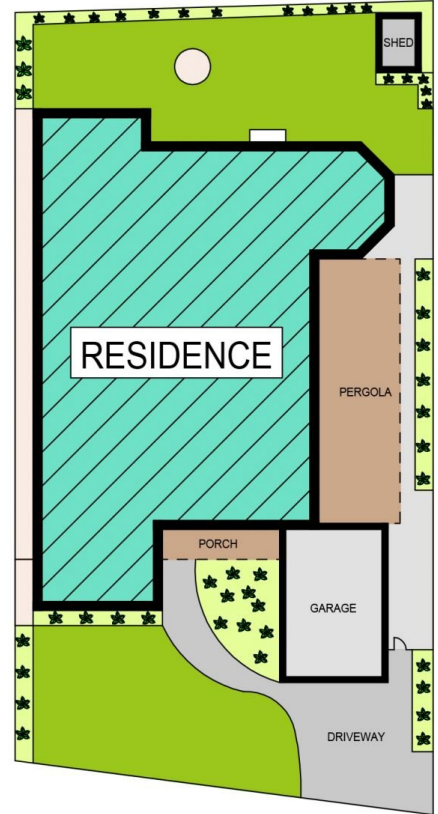
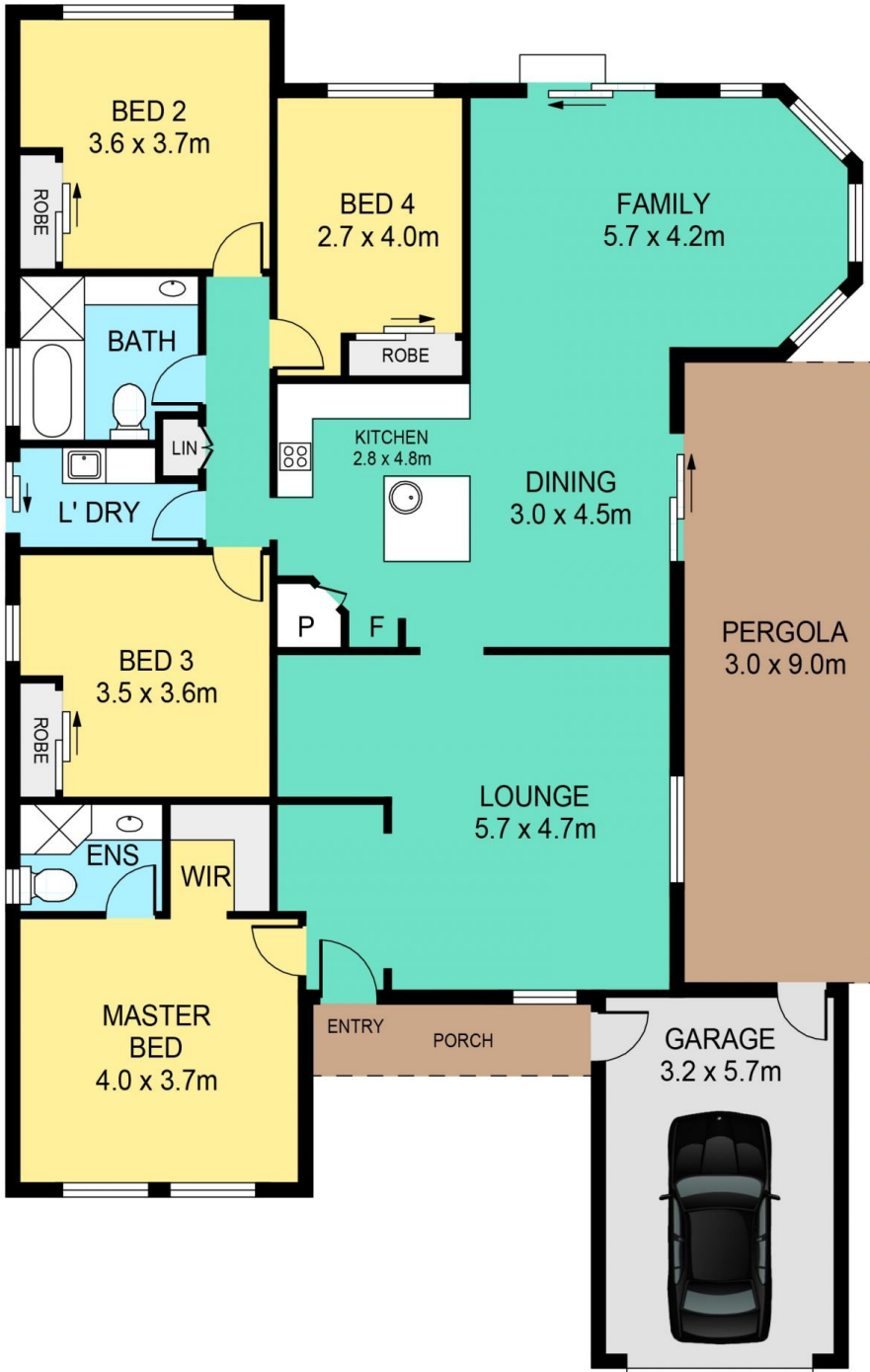
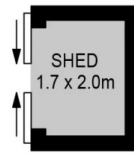
Price : \$ 1,030,000
View : <https://www.theavenurealestate.com.au/4813718>

Features include:

- Generously sized master bedroom, complete with walk-in wardrobe and immaculate ensuite
- Three other spacious bedrooms, all with built-in wardrobes
- Modern kitchen with 40mm caesarstone benchtops, island bench, gas cooking and stainless steel appliances



Chris De Celis
02 9634 3444



SITE PLAN

8 LYCETT AVENUE, KELLYVILLE

DISCLAIMER:

PLANS SHOWN ARE FOR MARKETING PURPOSES ONLY. ALL DIMENSIONS ARE APPROXIMATE AND NOT TO SCALE. THEY ARE SUBJECT TO ERRORS AND INACCURACIES AND NO LIABILITY WILL BE ACCEPTED. INTERESTED PARTIES SHOULD MAKE THEIR OWN INQUIRES.