



8 Hallett Court Kellyville NSW

5 3 2

Immediately feel at home the moment you enter this brand new double storey family home, located in the quiet pocket of North Kellyville. With a contemporary, modern design, open plan living and an abundance of entertaining areas, this property is perfect for a growing family. Conveniently accessible to North Kellyville Shopping Square, city express bus stops, premier schools and the future Kellyville Train Station, so do not miss out on this great opportunity!

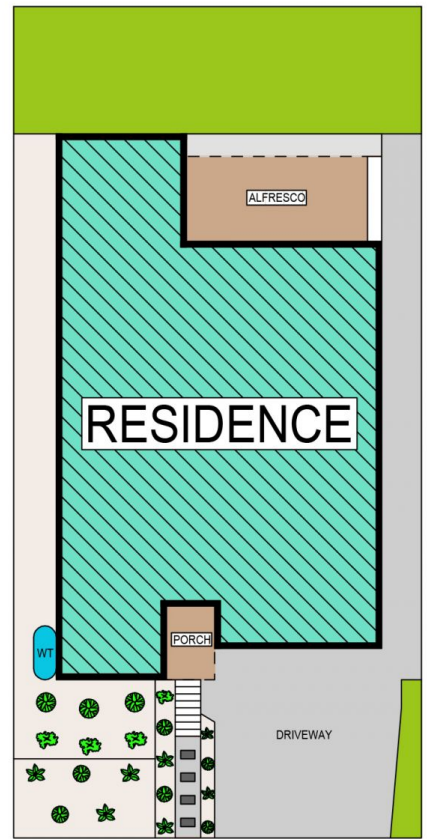
Price : \$ 1,340,000

View : <https://www.theavenurealestate.com.au/4813720>

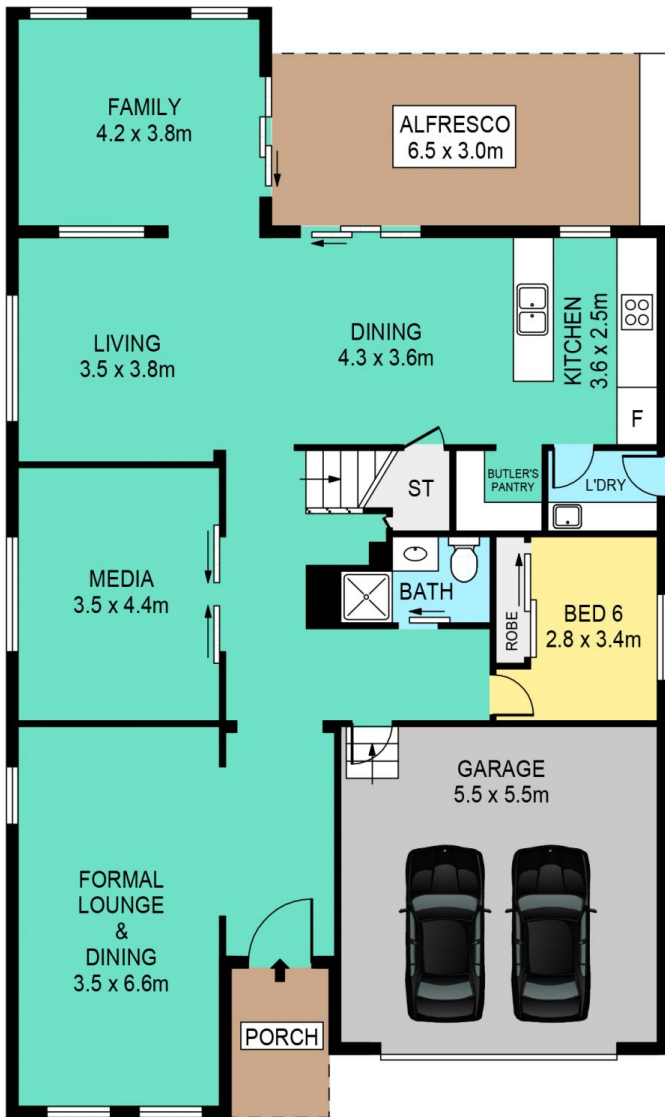
- Beautiful kitchen with 40mm Caesarstone bench top, quality stainless steel appliances, modern marble kitchen splash back and a Butler's pantry
- Multiple living area's including formal lounge room, large living and dining room, family room downstairs offering flexible living options to suit all the family
- Master bedroom with walk-in robe and large ensuite with



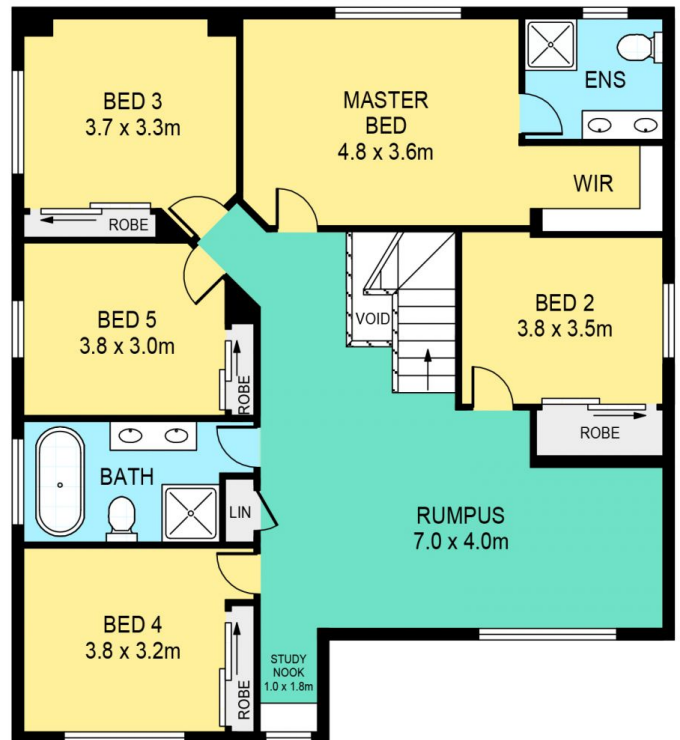
Chris De Celis
02 9634 3444



SITE PLAN



GROUND FLOOR



FIRST FLOOR

8 HALLETT COURT, KELLYVILLE

DISCLAIMER:

PLANS SHOWN ARE FOR MARKETING PURPOSES ONLY, ALL DIMENSIONS ARE APPROXIMATE AND NOT TO SCALE. THEY ARE SUBJECT TO ERRORS AND INACCURACIES AND NO LIABILITY WILL BE ACCEPTED. INTERESTED PARTIES SHOULD MAKE THEIR OWN INQUIRES.