



**106/144-152 Mallett Street Camperdown NSW**

1 1

Positioned in one of the most vibrant Sydney metro locations, this ultra-convenient apartment in a superbly-maintained and secure building is a smart choice for astute investors as well as first home buyers. With easy access to all amenities, you can enjoy your city lifestyle in a quiet location, or watch your investment grow while generating a sound rental income in this sought-after locale.

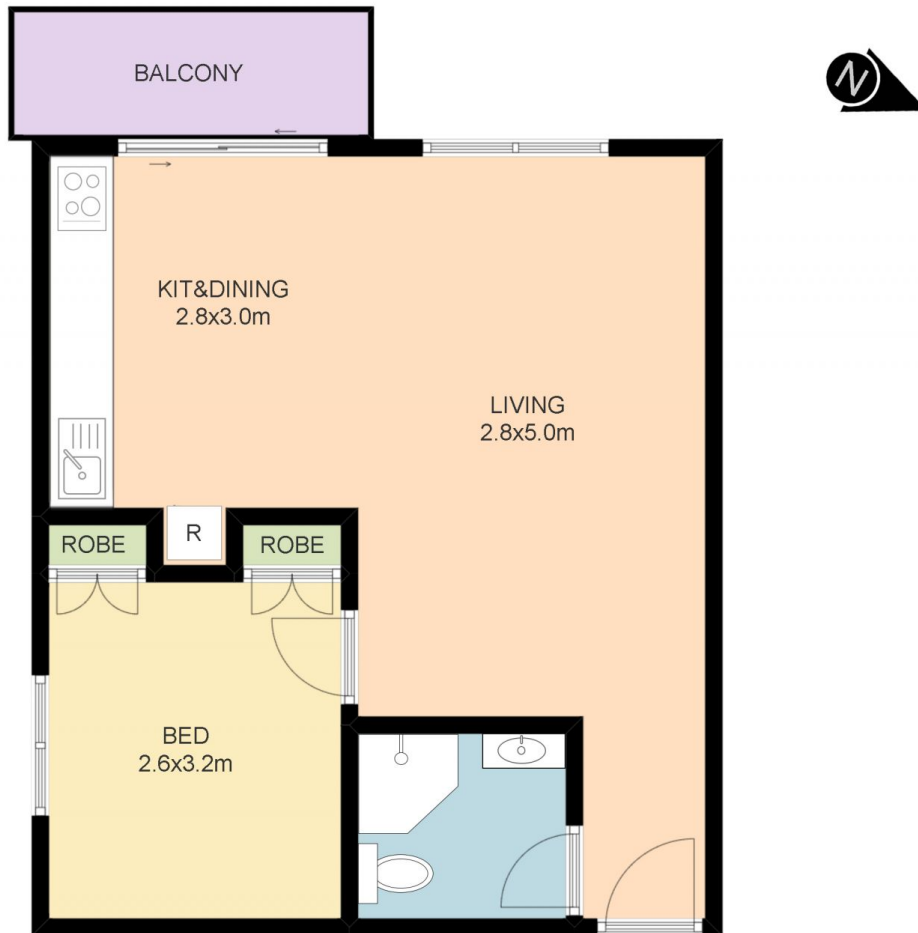
Features include:

- Bright living room with a balcony
- Modern kitchen with a dishwasher and concealed washing machine
- Stylish bathroom with stone benchtop
- Outdoor swimming pool for your fulfillment in hot summers
- Low strata levies

**Price** : \$ 490,000  
**Building Size** : 41 sqm  
**View** : <https://www.theavenuerealestate.com.au/4861851>



**Soha Soheili**  
**02 9634 3444**



## 106/144-152 Mallett Street, Camperdown

1m

### Disclaimer

Floor Plan measurements are approximate and are for illustrative purposes only. While we cannot doubt the floor plans accuracy, we make no guarantee, warranty or representation as to the accuracy and completeness of the plan