



## 6 Hyde Avenue Glenhaven NSW

6 4 3

This contemporary tri-level home is remarkable in both its size and quality. Positioned on a 3329 sqm block with expansive balconies and outdoor living spaces that capture the private bushland views throughout all levels of the home, it truly is a unique and breathtaking property.

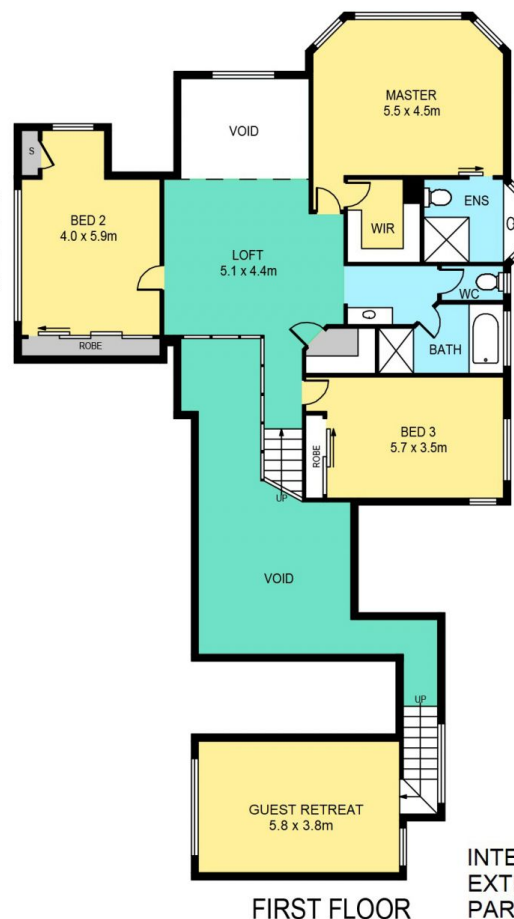
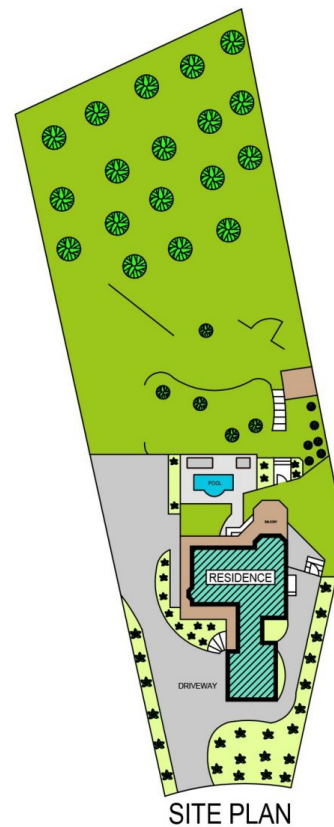
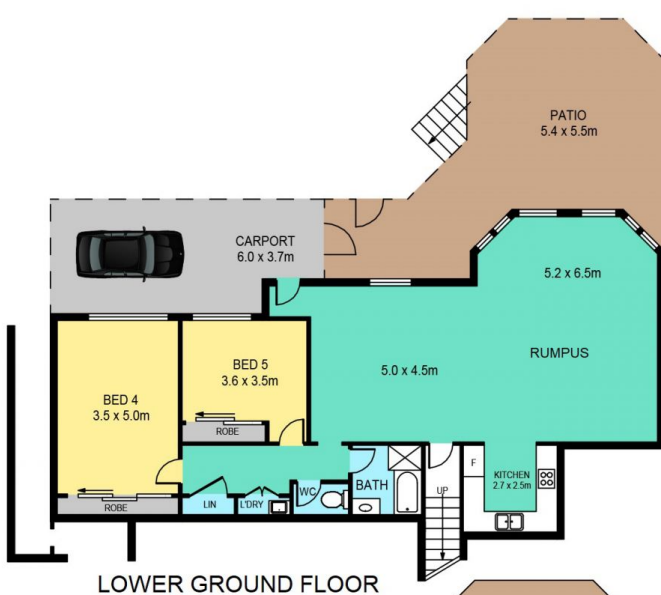
### Featuring:

- Multiple living, dining and entertaining areas on the ground floor, lower and upper levels
- Central entertainer's kitchen with granite benchtops, European appliances and generous cupboard and pantry space
- Large master bedroom with renovated ensuite bathroom with underfloor heating and walk-in robe
- Two other large bedrooms, both with built-in robes and easily accessible to the renovated family bathroom with separate bath, shower and WC

**Price** : \$ 2,500,000  
**Land Size** : 3329 sqm  
**View** : <https://www.theavenuerealestate.com.au/4871617>



**Chris De Celis**  
**02 9634 3444**



INTERNAL 509m<sup>2</sup>  
 EXTERNAL 140m<sup>2</sup>  
 PARKING 88m<sup>2</sup>  
 LAND 3329m<sup>2</sup>  
 APPROXIMATE SIZES

## 6 HYDE AVENUE, GLENHAVEN

### DISCLAIMER:

PLANS SHOWN ARE FOR MARKETING PURPOSES ONLY, ALL DIMENSIONS ARE APPROXIMATE AND NOT TO SCALE. THEY ARE SUBJECT TO ERRORS AND INACCURACIES AND NO LIABILITY WILL BE ACCEPTED. INTERESTED PARTIES SHOULD MAKE THEIR OWN INQUIRIES.