



35 Perry Street Dundas Valley NSW

5 2 2

Please watch the property introduction video.

Gracefully positioned on the high side of the street with mature gardens is this generous family home on a 828sqm block. With beautiful natural light, multiple formal and casual living and entertaining areas, and stunning views of the city skyline from the alfresco area and balcony. There is even a multi-purpose flat/studio/office, suitable for large or extended families or teenagers retreat offering potential for a separate income, this property is truly a unique offering in the market.

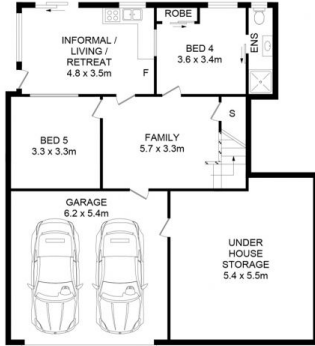
Featuring:

- Modern kitchen with a northerly aspect with stainless steel appliances, large pantry and plenty of storage
- Large, light filled lounge room with french doors leading to

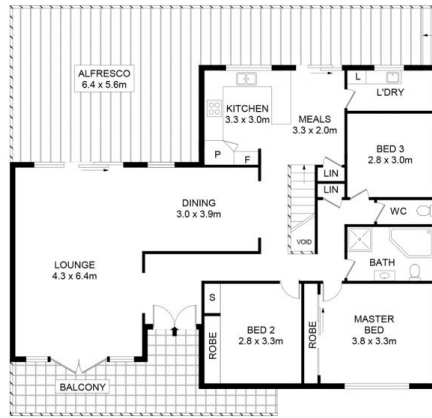
Price : \$ 1,432,500
Land Size : 828 sqm
View : <https://www.theavenurealestate.com.au/4894516>



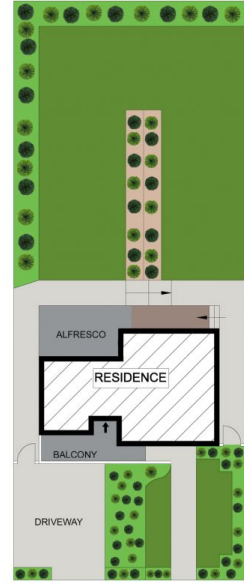
Chris De Celis
02 9634 3444



GROUND LEVEL



ENTRY LEVEL



SITE PLAN (NOT TO SCALE)

35 Perry Street, Dundas Valley

PLANS SHOWN ONLY INDICATIVE OF LAYOUT. DIMENSIONS ARE APPROXIMATE.
 Measurements are approximate and not to scale. The vendor, agency and supplier will accept no liability for its accuracy. Interested parties are advised to make their own independent enquiries.