



7 Wardington Rise Bella Vista NSW

4 3 2

Set on one of the highest points of the suburb with breathtaking district and mountain views, this modern family home in a highly sought-after street is as impressive as it looks.

Accommodation

- Four bedrooms, main with ensuite and walk-in robe
- Other bedrooms with generous size built-ins
- Dining and two living areas
- Study with an access to the side of the dwelling, ideal for a home office (STCA)
- Vogue polyurethane kitchen with Caesar stone bench-tops and ILVE appliances
- Three posh bathrooms with 10mm shower screens
- A wrap-around veranda with uninterrupted views of the valley & Blue Mountains
- Beautifully landscaped backyard, large alfresco area and

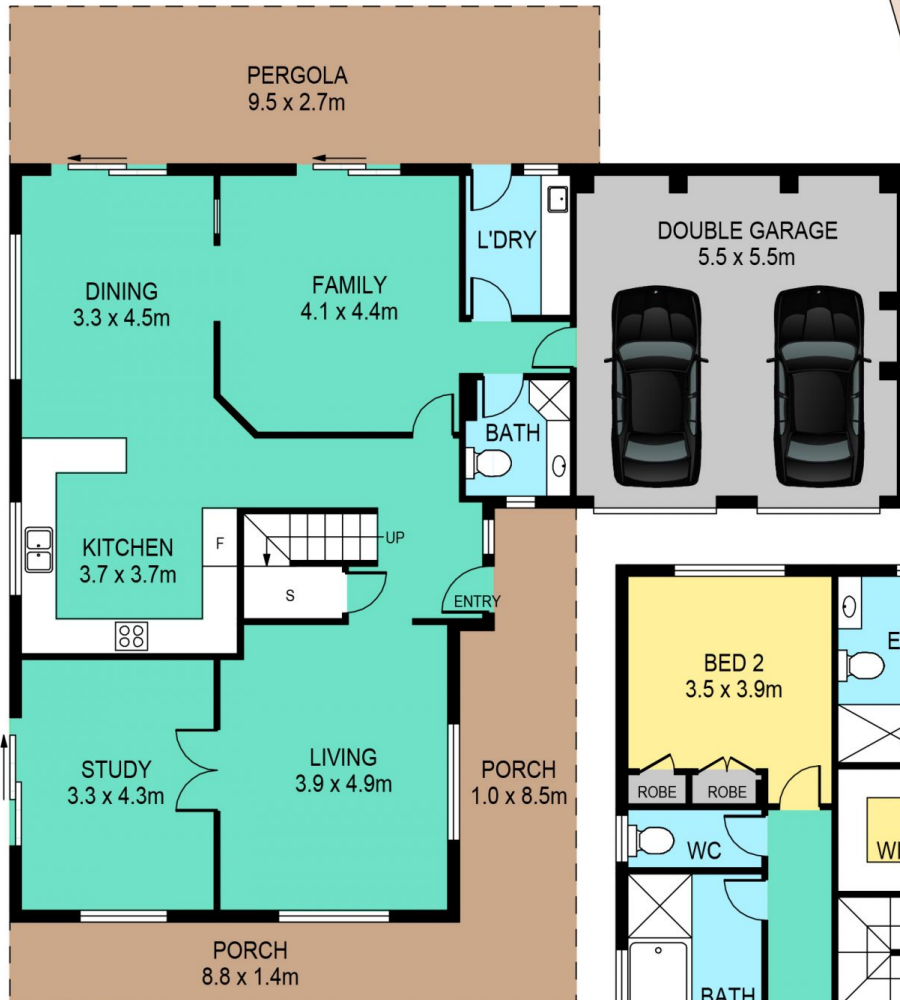
Price : \$ 1,510,000
Land Size : 794 sqm
View : <https://www.theavenuerealestate.com.au/4926214>



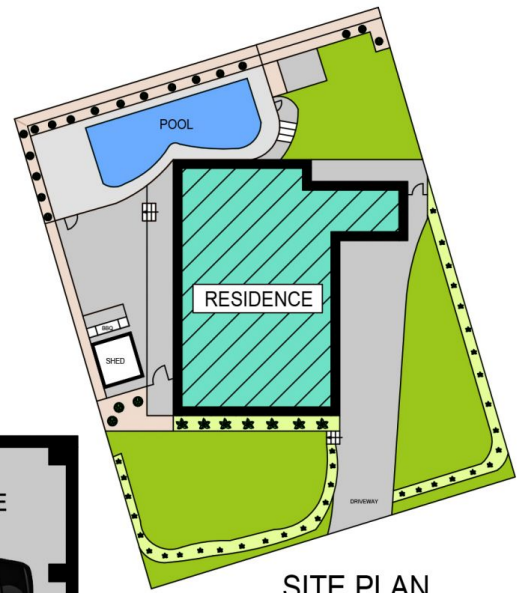
Soha Soheili
02 9634 3444



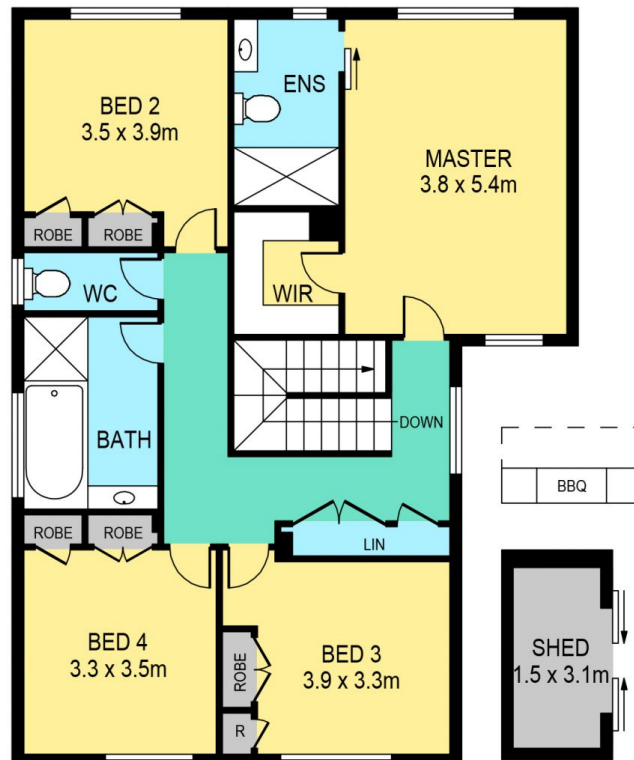
Sherry Soheili
0406 048 133



GROUND FLOOR



SITE PLAN



FIRST FLOOR

7 WARDINGTON RISE, BELLA VISTA

DISCLAIMER:

PLANS SHOWN ARE FOR MARKETING PURPOSES ONLY, ALL DIMENSIONS ARE APPROXIMATE AND NOT TO SCALE. THEY ARE SUBJECT TO ERRORS AND INACCURACIES AND NO LIABILITY WILL BE ACCEPTED. INTERESTED PARTIES SHOULD MAKE THEIR OWN INQUIRIES.