



22 Milford Drive Rouse Hill NSW

4 2 2

Positioned on a 635m2 block is this family friendly, single level home. Recently refreshed with a new kitchen, updated family bathroom and large outdoor entertaining area and swimming pool, this home is ready for you to move in, relax and enjoy.

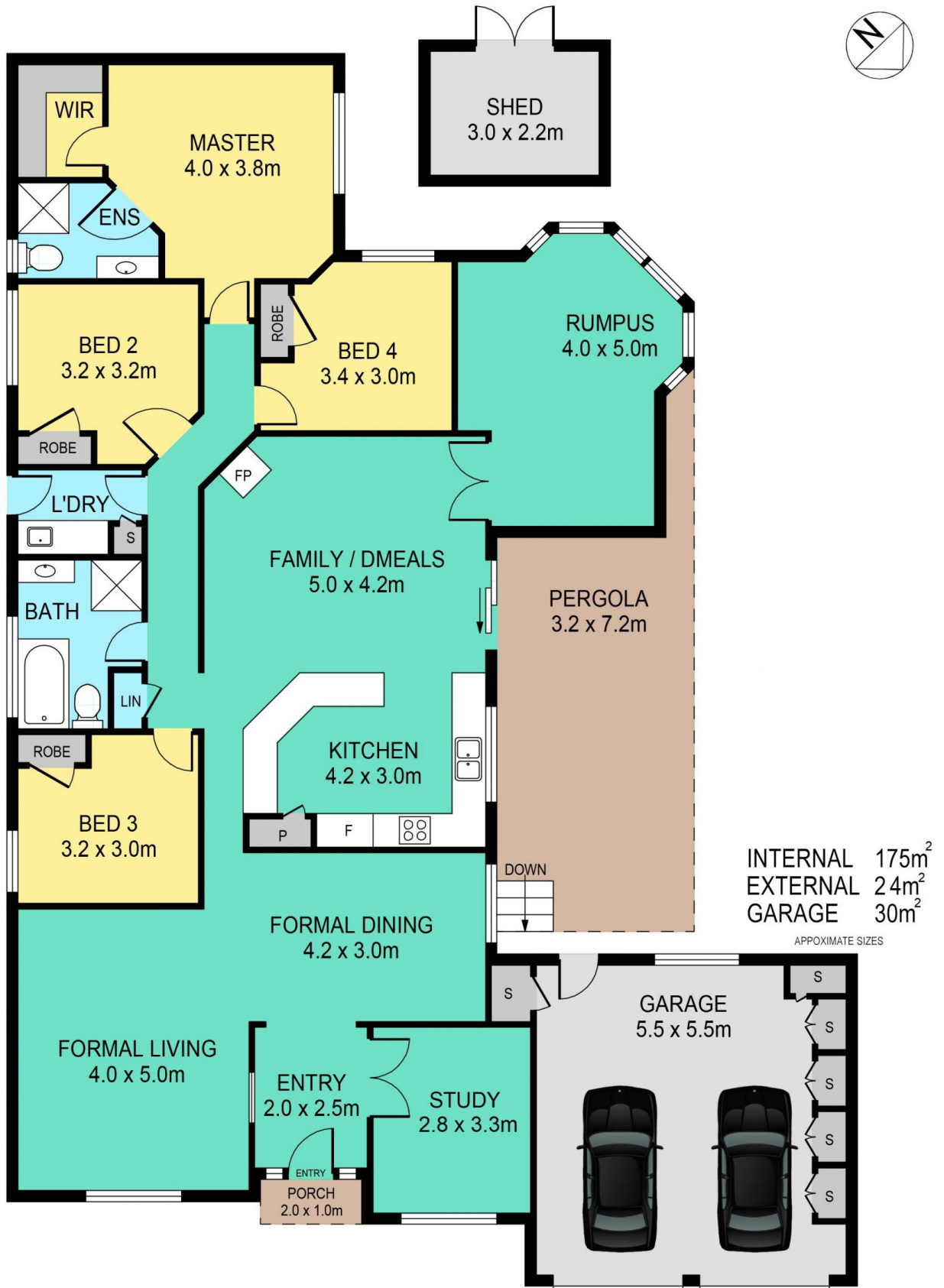
Price : \$ 1,069,000
Land Size : 635 sqm
View : <https://www.theavenurealestate.com.au/4986439>

Featuring:

- New kitchen with stone benchtops, induction cooktop and large walk-in pantry
- Flexible floorplan including formal lounge and dining rooms, relaxed living room/meals area off the kitchen and rumpus room
- Master bedroom with ensuite bathroom and walk in robe
- Three other generous bedrooms, all with built in robes
- Large family bathroom with freestanding bathtub, separate shower and large vanity
- Study with built-in joinery



Chris De Celis
02 9634 3444



22 MILFORD DRIVE, ROUSE HILL

DISCLAIMER:

PLANS SHOWN ARE FOR MARKETING PURPOSES ONLY, ALL DIMENSIONS ARE APPROXIMATE AND NOT TO SCALE. THEY ARE SUBJECT TO ERRORS AND INACCURACIES AND NO LIABILITY WILL BE ACCEPTED. INTERESTED PARTIES SHOULD MAKE THEIR OWN INQUIRIES.