



**4 Lomandra Crescent The Ponds NSW**

5 🏠 3 🚗 2 🚗

Positioned on the most sought after street in The Ponds is this breathtaking residence that is guaranteed to impress with a balance of sophisticated contemporary style and enhanced functionality. Cleverly integrating spacious in/outdoor entertaining areas with bespoke finishes and an abundance of natural light throughout, no expense has been spared.

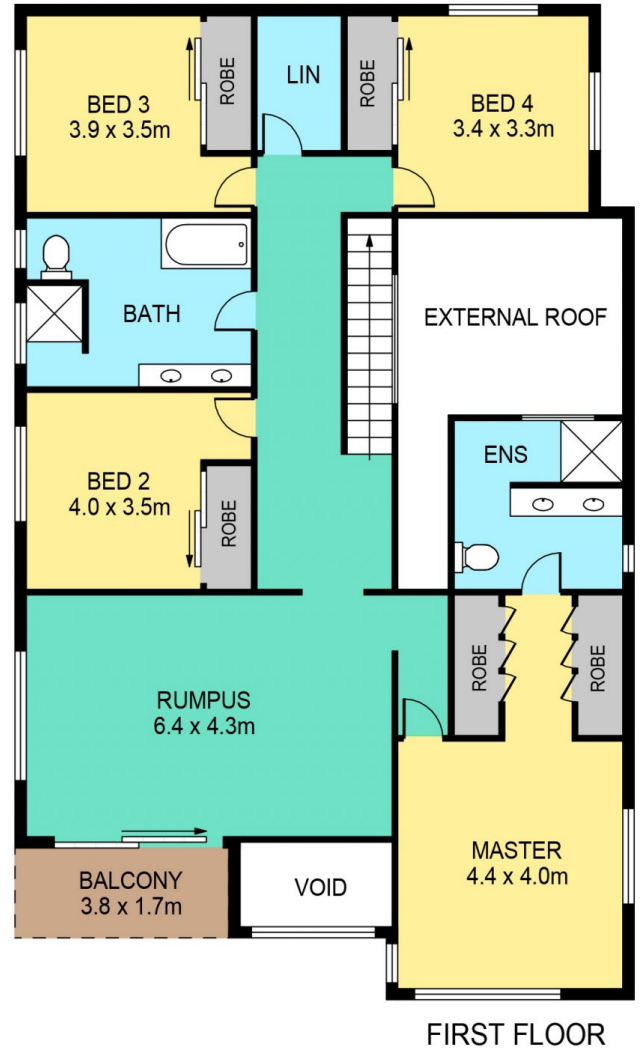
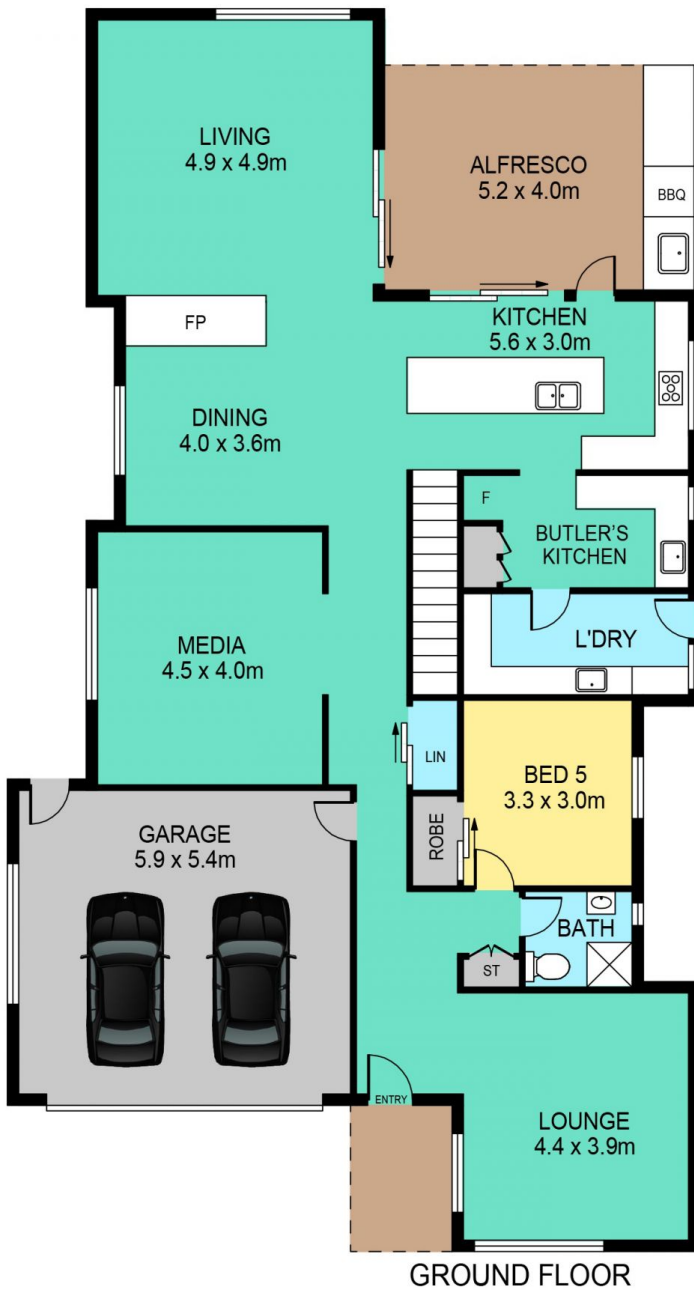
**Price** : \$ 1,330,000

**View** : <https://www.theavenurealestate.com.au/5060486>

With enormous street appeal, equipped with quality finishes throughout & being only a couple minutes walk to the picturesque Ironbark Lake & Lakes Edge Park, falling within the catchment to Riverbank Primary School & The Ponds High School, a short distance to Tallawong Railway Station, The Ponds Shopping Village & The Lake Neighbourhood Centre, this property ticks all the boxes & is perfect for any discerning buyer looking for a home to provide a luxury lifestyle with convenience at your finger



**Chris De Celis**  
02 9634 3444



## 4 LOMANDRA CRESCENT, THE PONDS

INTERNAL 295m<sup>2</sup>  
EXTERNAL 33m<sup>2</sup>  
GARAGE 32m<sup>2</sup>  
APPROXIMATE SIZES

**DISCLAIMER:**

PLANS SHOWN ARE FOR MARKETING PURPOSES ONLY, ALL DIMENSIONS ARE APPROXIMATE AND NOT TO SCALE. THEY ARE SUBJECT TO ERRORS AND INACCURACIES AND NO LIABILITY WILL BE ACCEPTED. INTERESTED PARTIES SHOULD MAKE THEIR OWN INQUIRIES.