



10 Castlefern Court Kellyville NSW

4 3 2

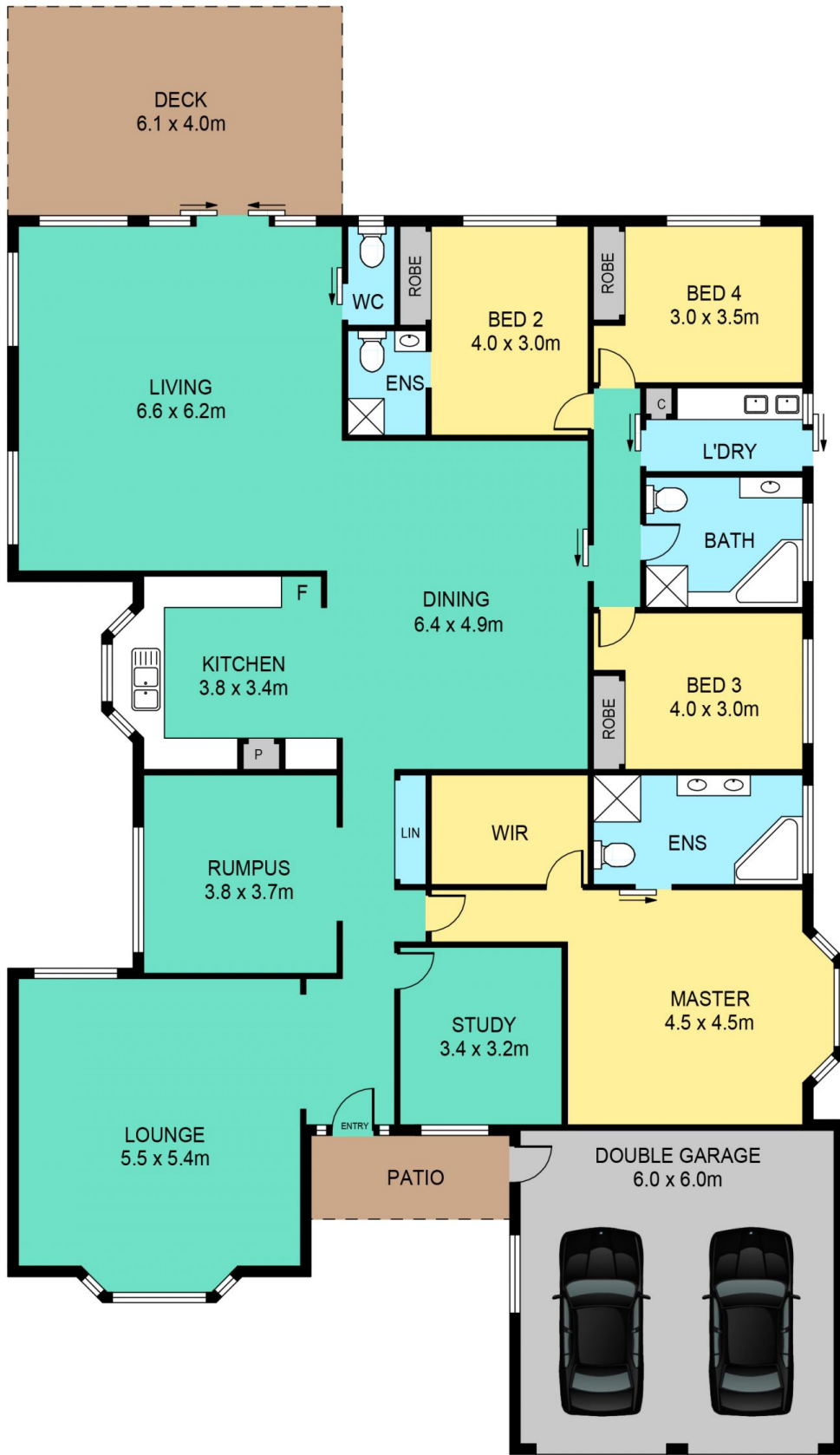
Positioned on a rare to find 683sqm block in a whisper quiet cul-de-sac is this beautifully maintained single level family home. With an abundance of natural light throughout and a generous floor plan with multiple living and entertaining areas and mature landscaping in the front and backyard, this home is perfect for a growing family.

Price : \$ 1,330,000
Land Size : 683 sqm
View : <https://www.theavenurealestate.com.au/5090008>

- Huge/central entertainers kitchen with loads of cupboard space also featuring new induction cooktop, new pyrolytic oven & new built-in microwave
- Multiple living area's including a spacious lounge, connected rumpus and separate study located at the front of the home. Spacious dining & large family room at the rear of the home which leads into the outdoor alfresco area giving the family plenty of living options
- Master bedroom with walk in robe and generous ensuite bathroom with shower, corner bath plus double vanity



Chris De Celis
02 9634 3444



10 CASTLEFERN COURT, KELLYVILLE

DISCLAIMER:

PLANS SHOWN ARE FOR MARKETING PURPOSES ONLY. ALL DIMENSIONS ARE APPROXIMATE AND NOT TO SCALE. THEY ARE SUBJECT TO ERRORS AND INACCURACIES AND NO LIABILITY WILL BE ACCEPTED. INTERESTED PARTIES SHOULD MAKE THEIR OWN INQUIRIES.

INTERNAL	256sqm
EXTERNAL	32sqm
GARAGE	36sqm