

16 Park Ridge Circuit Kellyville NSW

4 2 2

Positioned on a generous 562sqm block and with an expansive floor plan that allows for generous living and entertaining areas and a stylish inground swimming pool in the backyard, you will be impressed with the scale and size of this large family home.

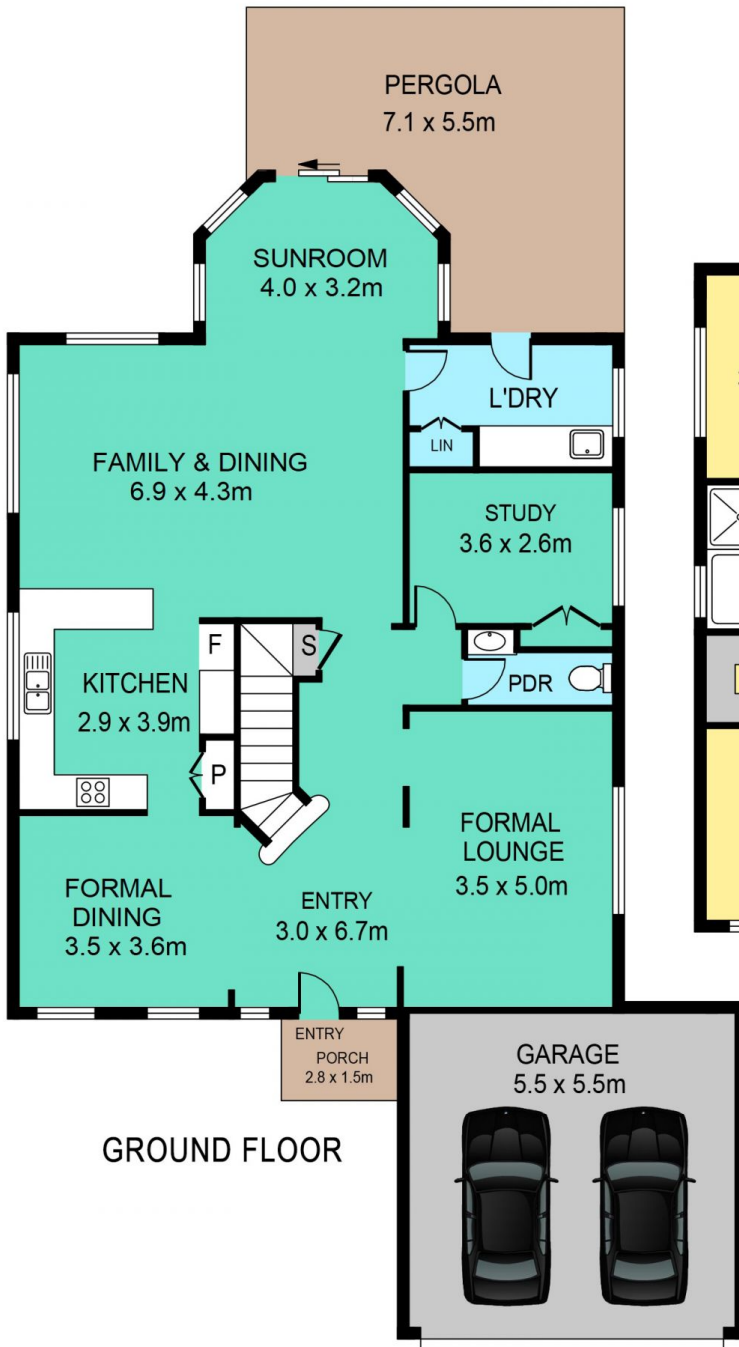
Price : \$ 1,385,000
Land Size : 562 sqm
View : <https://www.theavenurealestate.com.au/5090406>

Featuring:

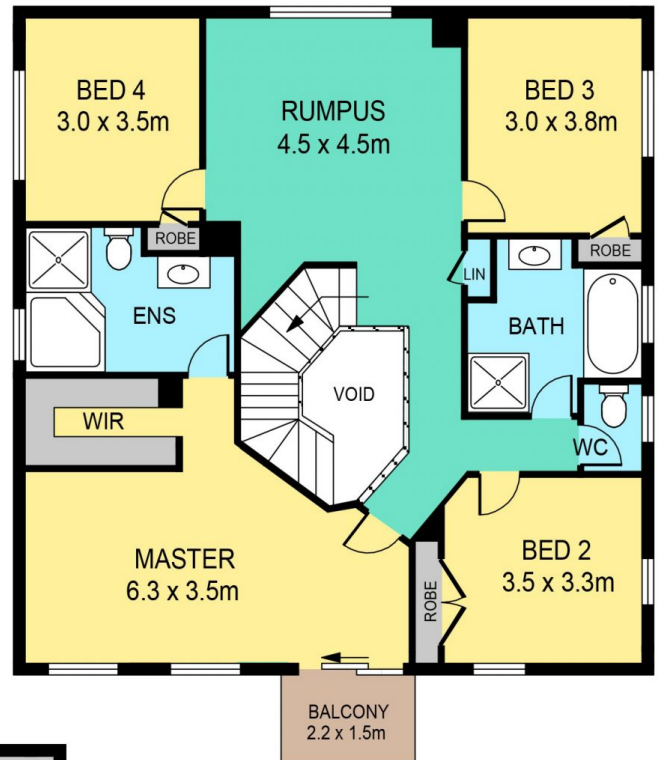
- Formal and informal living and dining areas, plus large upstairs rumpus room
- Stylish kitchen with 40mm stone bench tops, stainless steel appliances and plenty of cupboard and storage space
- Light filled dining area conveniently located off the kitchen
- Master bedroom retreat with ensuite bathroom with shower & corner bath also featuring walk in robe & private balcony



Chris De Celis
02 9634 3444



GROUND FLOOR



FIRST FLOOR

INTERNAL 244m²
EXTERNAL 33m²
GARAGE 30m²

APPROXIMATE SIZES

16 PARK RIDGE CIRCUIT, KELLYVILLE

DISCLAIMER:

PLANS SHOWN ARE FOR MARKETING PURPOSES ONLY. ALL DIMENSIONS ARE APPROXIMATE AND NOT TO SCALE. THEY ARE SUBJECT TO ERRORS AND INACCURACIES AND NO LIABILITY WILL BE ACCEPTED. INTERESTED PARTIES SHOULD MAKE THEIR OWN INQUIRIES.