



34 Benalla Avenue Kellyville NSW

5 3 2

Positioned on a large 697m2 block, this single level property has been completely transformed with a stylish, modern renovation, offering you the perfect opportunity to move in with not a thing to do but relax and enjoy. With a generous floorplan, offering large open plan living and entertaining, plus a private master suite, this home offers it all for a large family.

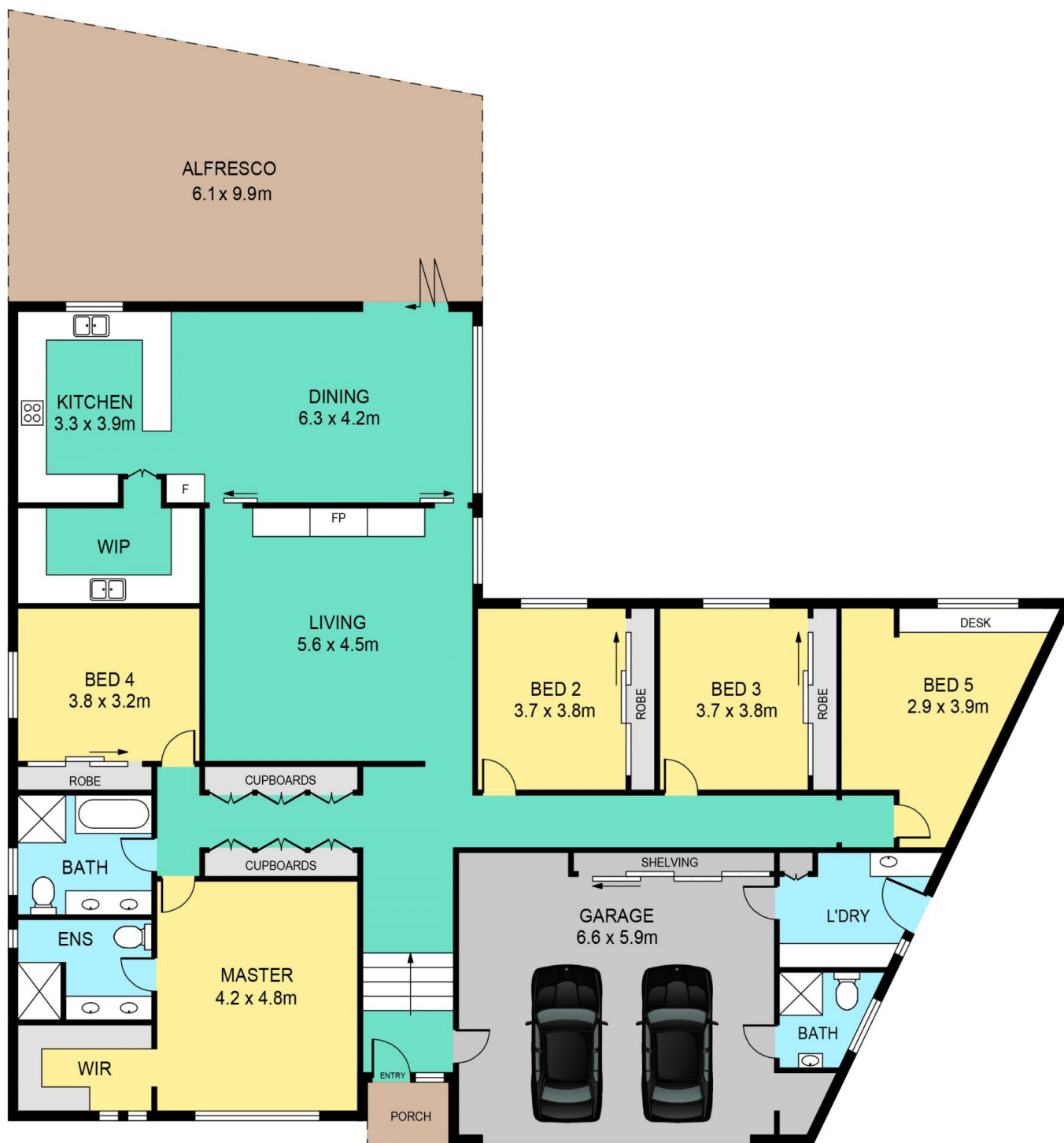
Land Size : 697 sqm
View : <https://www.theavenurealestate.com.au/5096780>

Featuring:

- Luxurious kitchen with 40mm stone benchtops, two-tone cabinetry, 900mm freestanding cooker, servery window to the alfresco area and a large walk in pantry/butlers kitchen with additional prep area
- Large dining room surrounded by bi-fold doors, leading out to the undercover alfresco area
- Modern living room with timber feature wall and built-in fireplace



Chris De Celis
02 9634 3444



34 BENALLA AVENUE , KELLYVILLE

DISCLAIMER:

PLANS SHOWN ARE FOR MARKETING PURPOSES ONLY, ALL DIMENSIONS ARE APPROXIMATE AND NOT TO SCALE. THEY ARE SUBJECT TO ERRORS AND INACCURACIES AND NO LIABILITY WILL BE ACCEPTED. INTERESTED PARTIES SHOULD MAKE THEIR OWN INQUIRIES.

INTERNAL	210 sqm
EXTERNAL	54 sqm
GARAGE	40 sqm