



25/11-13 Pye Avenue Northmead NSW

4 2 2

Blending its rich heritage with contemporary features and design, is this truly unique property "Pye Cottage". Thoughtfully re-imagined for the modern day, and with a peaceful, bushland outlook over Darling Mills Creek, this home is well positioned to capture the essence of modern living while retaining its charming, period character and style.

- Solid timber kitchen with granite benchtops, modern appliances and ample prep and storage space
- Open plan living and dining rooms, plus family room adjacent to the large kitchen
- Three generous bedrooms, all with built-in robes
- Large family bathroom with separate bath, shower and W/C
- Spacious self-contained wing with it's own entry, full bathroom and modern galley-style kitchen

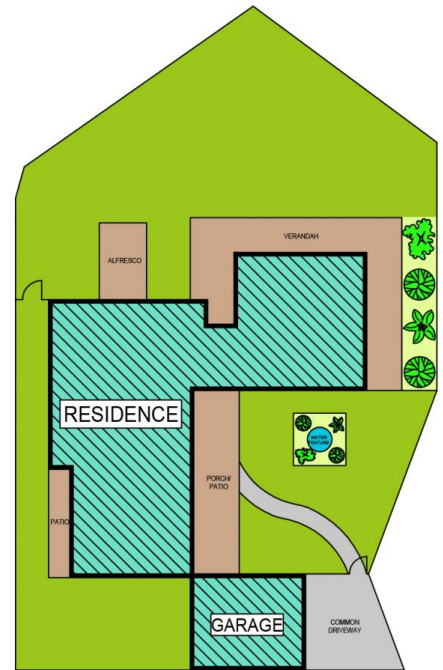
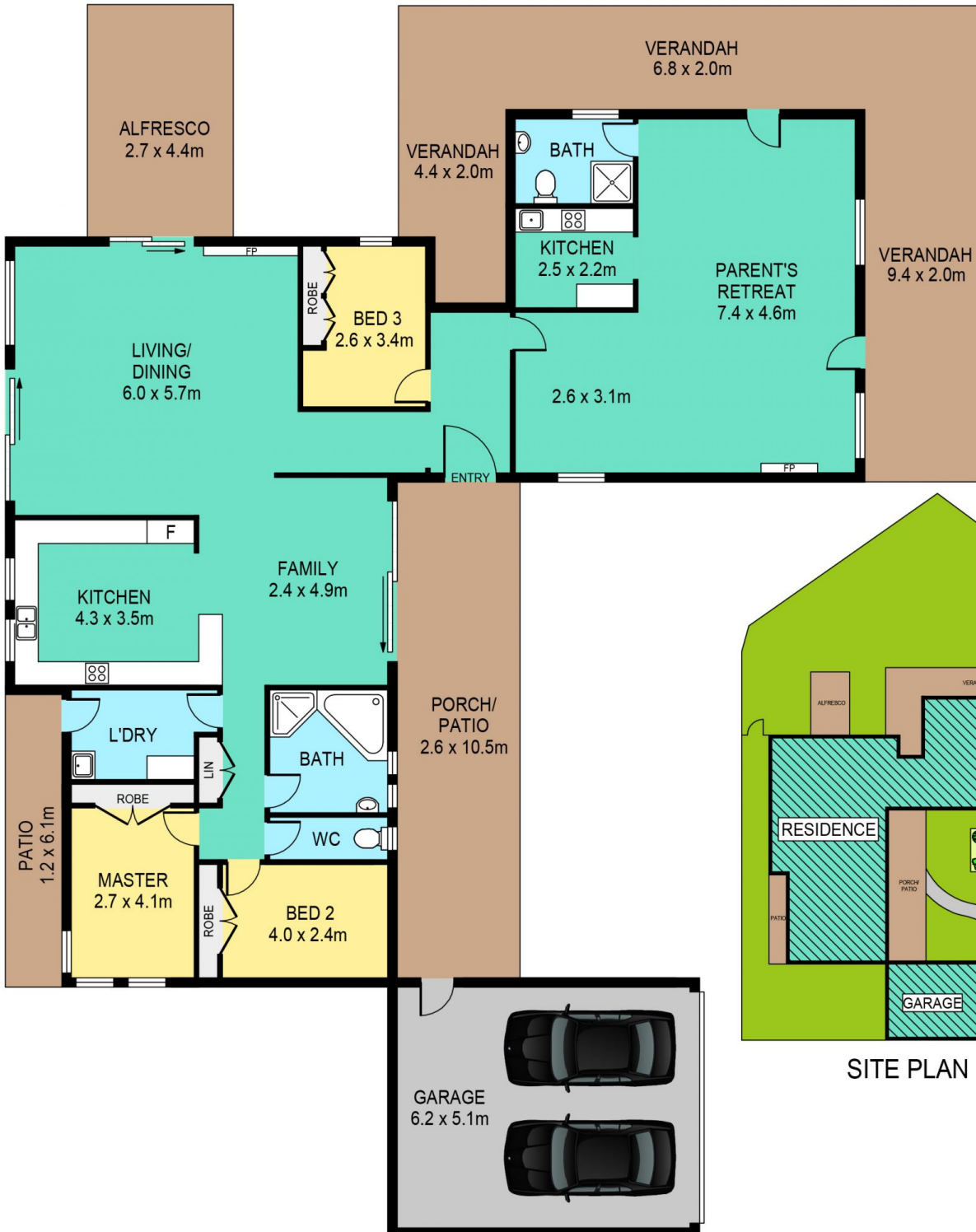
Price : \$ 1,470,000
Land Size : 711 sqm
View : <https://www.theavenurealestate.com.au/5654608>



Chris De Celis
02 9634 3444



Steve Cole
02 9634 3444



SITE PLAN

25/11-13 PYE AVENUE, NORTHMEAD

DISCLAIMER:

PLANS SHOWN ARE FOR MARKETING PURPOSES ONLY. ALL DIMENSIONS ARE APPROXIMATE AND NOT TO SCALE. THEY ARE SUBJECT TO ERRORS AND INACCURACIES AND NO LIABILITY WILL BE ACCEPTED. INTERESTED PARTIES SHOULD MAKE THEIR OWN INQUIRIES.

INTERNAL	179sqm
EXTERNAL	87sqm
GARAGE	32sqm