

**22 Woodhill Street Castle Hill NSW**

6 3 4

Designed for the modern family, this home presents a unique opportunity with rare features including underground 4 car garage & storage, state of the art home technology, personal gymnasium and even a pro style basketball court.

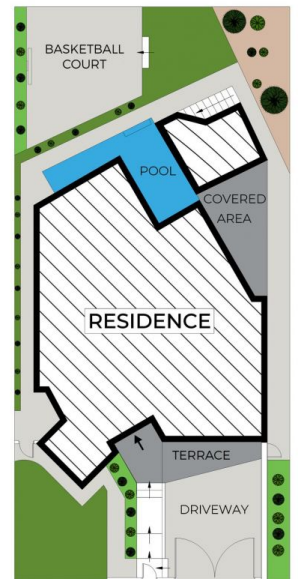
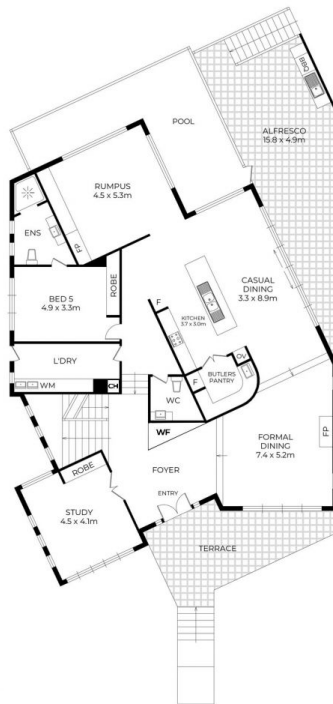
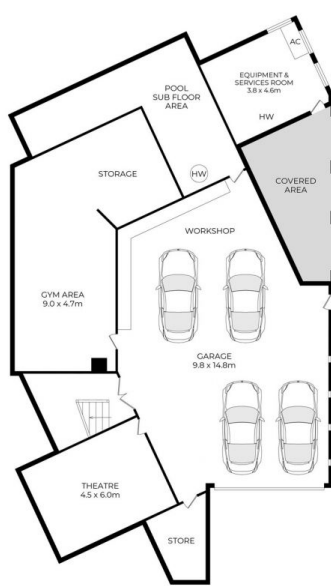
**Featuring:**

- Full service chef's kitchen with two-tone poly cabinets with Smeg appliances, white 80mm Essastone counter tops, central waterfall island bench and Butlers pantry
- Adjoining casual dining room leading out to the undercover entertaining area
- Formal dining room with statement chandelier light fitting & fireplace
- Rumpus room with crackling built in gas fireplace, custom joinery and bespoke 12mm laminated double glazed tinted floor-to-ceiling windows

**Price** : \$ 3,018,000  
**Land Size** : 696 sqm  
**View** : <https://www.theavenuerealestate.com.au/5919291>



**Chris De Celis**  
**02 9634 3444**



## 22 Woodhill Street, Castle Hill

PLANS SHOWN ONLY INDICATIVE OF LAYOUT. DIMENSIONS ARE APPROXIMATE.  
Measurements are approximate and not to scale. The vendor, agency and supplier will accept no liability for its accuracy. Interested parties are advised to make their own independent enquiries.

THE  
AVENUE  
REAL ESTATE