



34 Greenbank Drive Glenhaven NSW

4 3 3

Occupying a large 900m2 parcel of quiet bushland is this tri-level master built home. With multiple entertaining, lounging and dining areas, plus a lower floor retreat, suitable for extended family or weekend guests, this property is a unique and rare offering. With an unassuming facade, once you step inside the property, you will marvel at the peaceful bushland outlook and clever design of the home for a modern family.

Featuring:

- Ground floor consisting of open plan lounge, meals and family rooms all opening out onto the large undercover alfresco entertaining area
- Modern kitchen with island bench, 900mm oven with gas cooktop and generous storage and pantry
- Lower ground floor designed as a superb retreat offering privacy and featuring a bedroom, kitchen, lounge room and

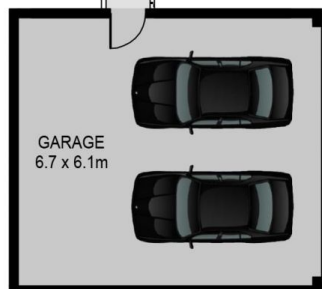
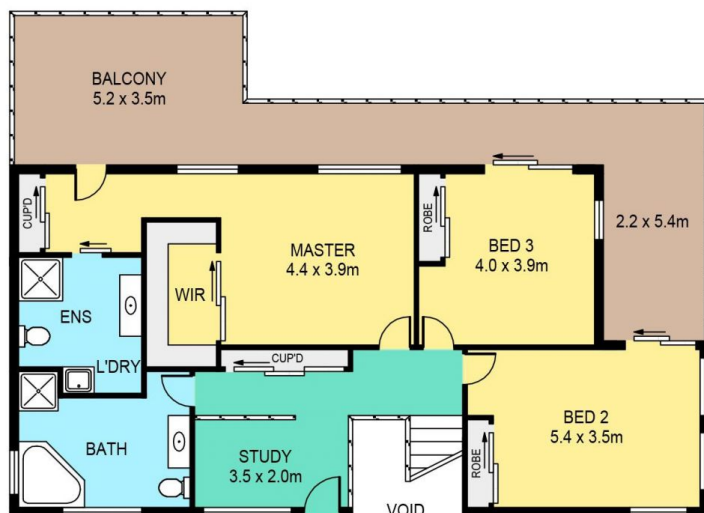
Price : \$ 1,795,000
Land Size : 900 sqm
View : <https://www.theavenuerealestate.com.au/6252319>



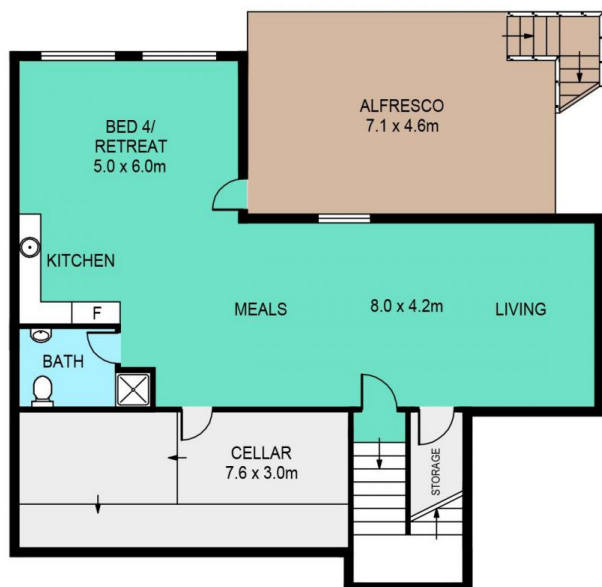
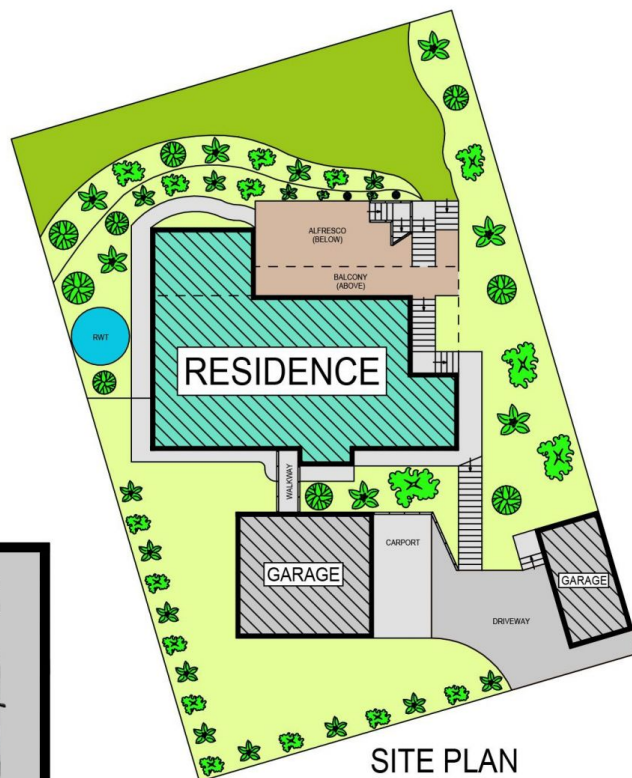
Steve Cole
02 9634 3444



Chris De Celis
02 9634 3444



FIRST FLOOR



LOWER GROUND FLOOR



GROUND FLOOR

34 GREENBANK DRIVE, GLENHAVEN

DISCLAIMER:

PLANS SHOWN ARE FOR MARKETING PURPOSES ONLY. ALL DIMENSIONS ARE APPROXIMATE AND NOT TO SCALE. THEY ARE SUBJECT TO ERRORS AND INACCURACIES AND NO LIABILITY WILL BE ACCEPTED. INTERESTED PARTIES SHOULD MAKE THEIR OWN INQUIRIES.

INTERNAL	346sqm
EXTERNAL	115sqm
GARAGE	41sqm