



1 Donnegal Court Castle Hill NSW

5 2 2

Offering a contemporary design with spacious living, dining and first-class entertaining zones, be captivated as you step inside this magnificent family home a masterpiece that brilliantly blends modern opulence and meticulous attention to the finest detail set in a highly prized position. Residing in a quiet cu-de-sac opposite a tranquil parkland this magnificent family home commands attention with grandeur and quality features for a completely unparalleled family lifestyle.

Featuring:

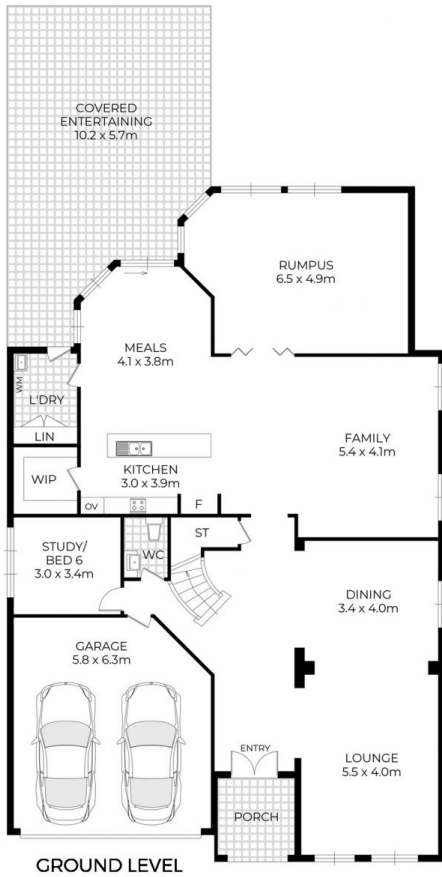
- A flexible floorplan offering an imposing entry hall with feature staircase
- Superb formal and informal living areas with upstairs living area perfect for those who love to live and entertain
- Gourmet kitchen with stone bench tops and kitchen island with stainless steel appliances, gas cooktop and walk-in

Price : \$ 2,338,000

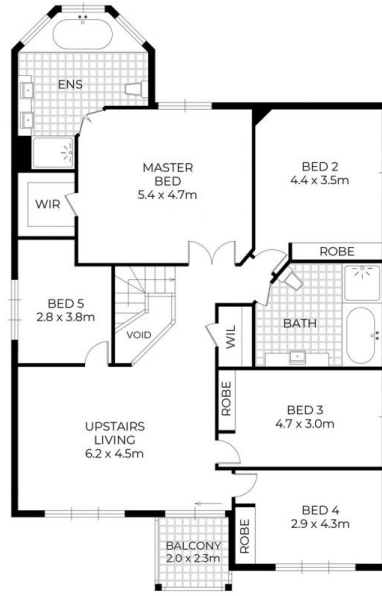
View : <https://www.theavenurealestate.com.au/6406983>



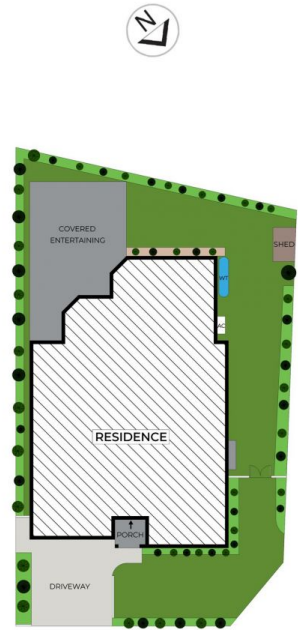
Chris De Celis
02 9634 3444



GROUND LEVEL



UPPER LEVEL



SITE PLAN (NOT TO SCALE)

1 Donnegal Court, Castle Hill

PLANS SHOWN ONLY INDICATIVE OF LAYOUT. DIMENSIONS ARE APPROXIMATE.
Measurements are approximate and not to scale. The vendor, agency and supplier will accept no liability for its accuracy. Interested parties are advised to make their own independent enquiries.