



21/11 Glenvale Avenue Parklea NSW

2 2 2

This modern townhouse is located within the popular 'Sunora Estate' complex. Residents enjoy access to resort style facilities including tennis court, pool, gym and barbecue area. Located for a lifestyle of convenience, it is within a short walk to T-way buses and schools while enjoying close proximity to Stanhope Village Shopping Centre and Bella Vista Metro Station.

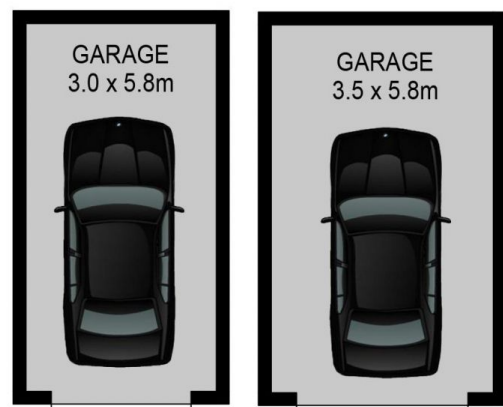
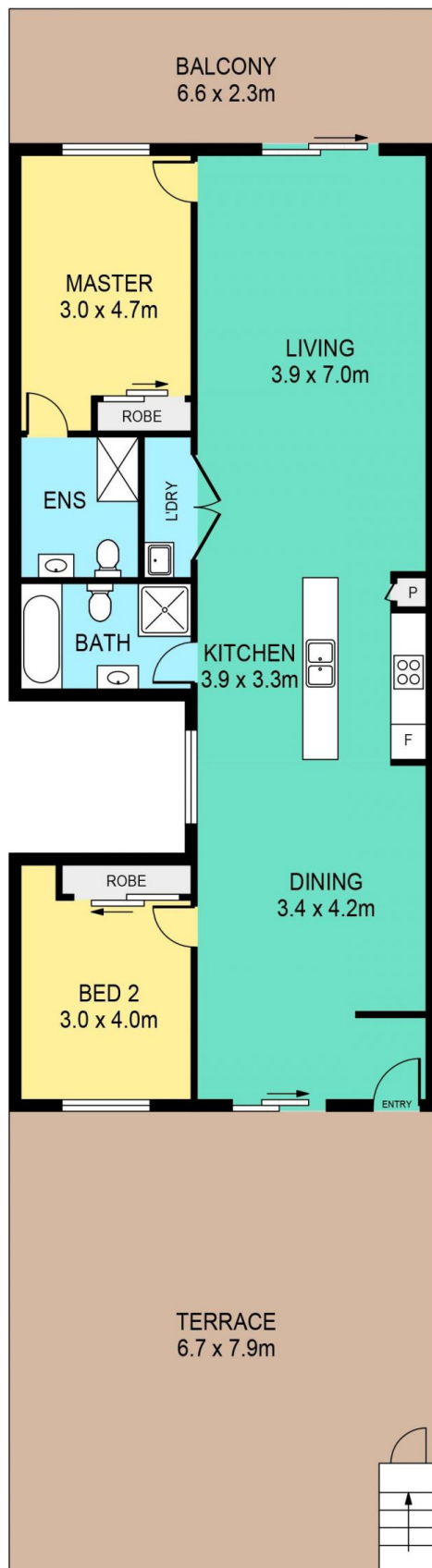
- ? Free flowing floorplan providing open plan living and dining areas
- ? Kitchen featuring gas cooking, dishwasher plus ample storage and bench space
- ? Large private alfresco area and smaller balcony overlooking the swimming pool
- ? Two bedrooms all fitted with built-in wardrobes, main complete with ensuite
- ? Split system air conditioning to lounge, underground

Price : \$ 488,888

View : <https://www.theavenuerealestate.com.au/6460561>



Chris De Celis
02 9634 3444



21/11 GLENVALE AVENUE, PARKLEA

DISCLAIMER:

PLANS SHOWN ARE FOR MARKETING PURPOSES ONLY. ALL DIMENSIONS ARE APPROXIMATE AND NOT TO SCALE. THEY ARE SUBJECT TO ERRORS AND INACCURACIES AND NO LIABILITY WILL BE ACCEPTED. INTERESTED PARTIES SHOULD MAKE THEIR OWN INQUIRIES.

INTERNAL	102sqm
EXTERNAL	71sqm
GARAGE	37sqm