



13/16-20 Mercer Street Castle Hill NSW

2 2 2

Capturing the essence of contemporary living this impressive low density apartment creates a unique inner urban oasis in a highly sought-after pocket of Castle Hill. Enviably located in the prized 'Pichola Place' complex, you will enjoy this gracious apartment's spacious living and dining areas, opening to a private garden balcony.

The location is the shortest of walking distances to some of Castle Hills best cafes and restaurants with access to all the main lifestyle hubs. An unrivalled balance of space, sophistication and garden surroundings highlight the exceptional lifestyle, it truly celebrates a sincere understanding of how to live.

Featuring:

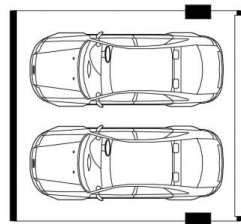
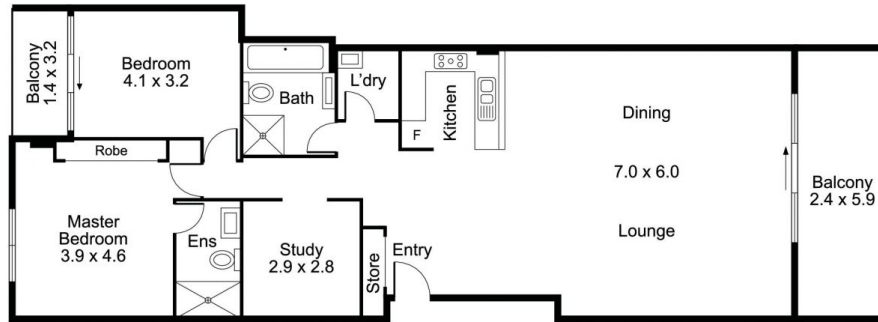
? Spacious open plan living and dining areas opening out to a private balcony

Price : \$ 910,000

View : <https://www.theavenuerealestate.com.au/6499257>



Chris De Celis
02 9634 3444



Secure Double Garage
5.5 x 5.2
(Not In Position)

Storage
Cage
3.4 x 2.5
(Not In Position)



13/16-20 Mercer Street, Castle Hill

Every care has been taken to verify the accuracy of the details and dimensions in this property plan. Prospective purchasers are advised to make their own enquiries to satisfy themselves in all respects. The plan is a representation only and is not necessarily to scale.