



36 County Drive Cherrybrook NSW

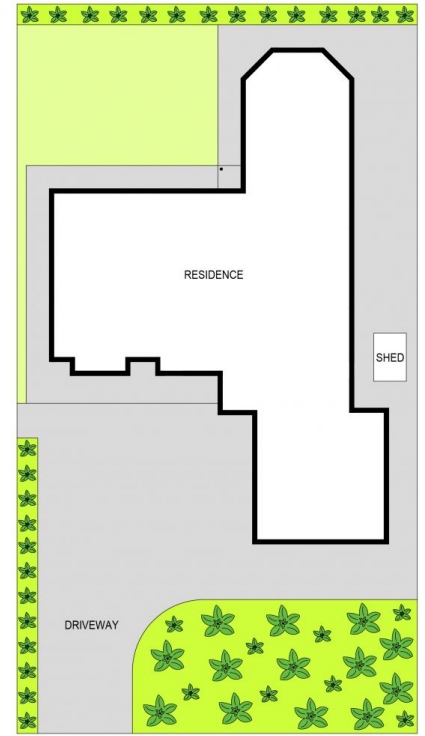
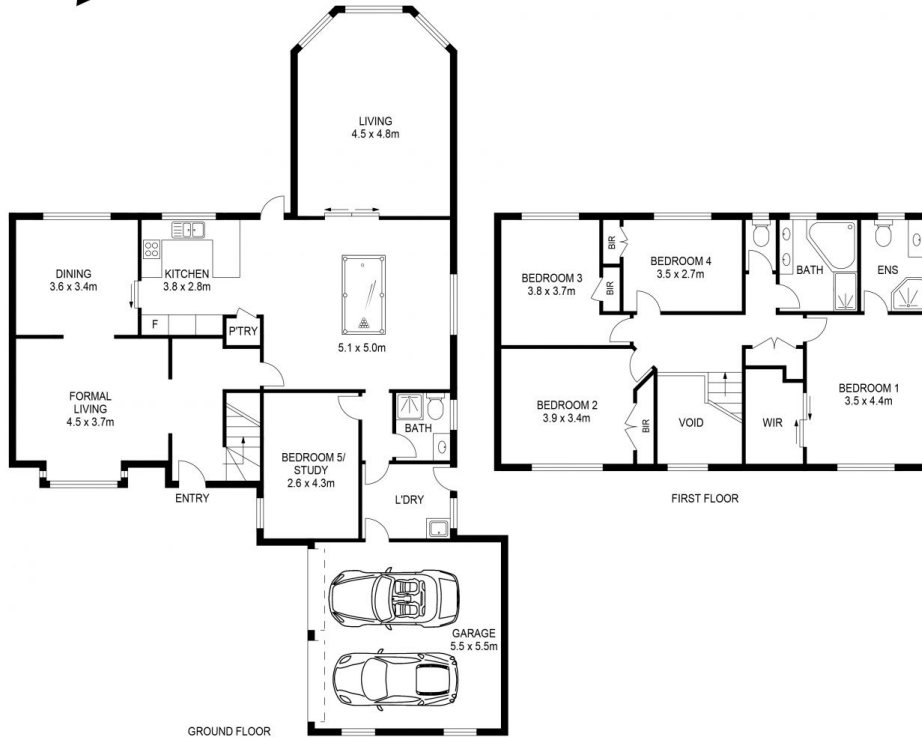
5 3 2

Situated in the priority precinct of Cherrybrook and located in the catchment area for Cherrybrook Technology High School and Cherrybrook Public School, plus within walking distance to Cherrybrook Metro Station, this property is conveniently located for all your needs.

Price : \$ 2,125,000
Land Size : 559 sqm
View : <https://www.theavenuerealestate.com.au/6619133>



Chris De Celis
02 9634 3444



PLANS SHOWN ONLY INDICATIVE OF LAYOUT. DIMENSIONS ARE APPROXIMATE.

Measurements are approximate and not to scale. The vendor, agency and supplier will accept no liability for its accuracy for its accuracy. Interested parties are advised to make their own independent enquiries.

36 COUNTY DRIVE, CHERRYBROOK

THE
AVENUE
REAL ESTATE