

908/12 Pennant Street Castle Hill NSW

2 2 2

Since its construction in 2005, The Horizons has arguably posed as the most desirable apartment living in the suburb due to its convenience of access to everything for your daily needs. Situated directly opposite Castle Towers Shopping Centre and on top of the public library, this relatively small boutique apartment complex offers an opportunity like no others.

Now, with the added advantage of City Metro and many bus routes within a walking distance, The Horizons is more popular than ever.

Besides the easy lifestyle, other reasons this place should be on top of your list are the pedantic maintenance of the building and security.

This quality-built, bright apartment on level 9 is being

Price : \$ 900,000

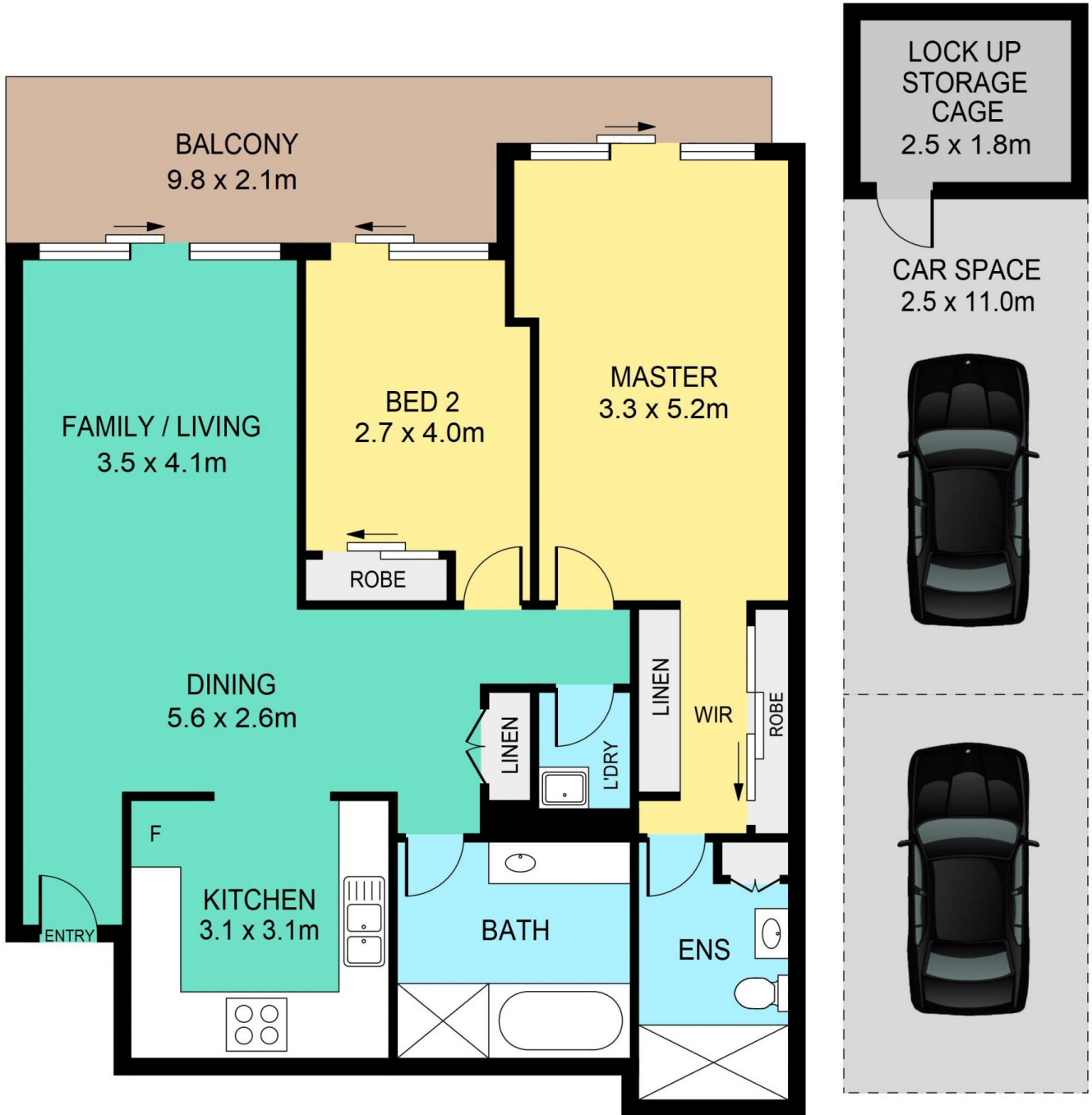
View : <https://www.theavenuerealestate.com.au/6645845>



Soha Soheili
02 9634 3444



Sherry Soheili
0406 048 133



908/12 PENNANT STREET, CASTLE HILL

DISCLAIMER:
PLANS SHOWN ARE FOR MARKETING PURPOSES ONLY. ALL DIMENSIONS ARE APPROXIMATE AND NOT TO SCALE. THEY ARE SUBJECT TO ERRORS AND INACCURACIES AND NO LIABILITY WILL BE ACCEPTED. INTERESTED PARTIES SHOULD MAKE THEIR OWN INQUIRIES.

INTERNAL	91sqm
EXTERNAL	14sqm
PARKING	27.5sqm