



**10 Mark Place Cherrybrook NSW**

4 2 2

Located on a generous approx. 910m2 level block on the high side of the street within a family-friendly neighbourhood, is this single level home in a calm and peaceful environment. With recent updates this beautifully maintained property is perfect for a family wanting to grow and interact with the lively Cherrybrook community looking for good living and a lifestyle that blends location and convenience.

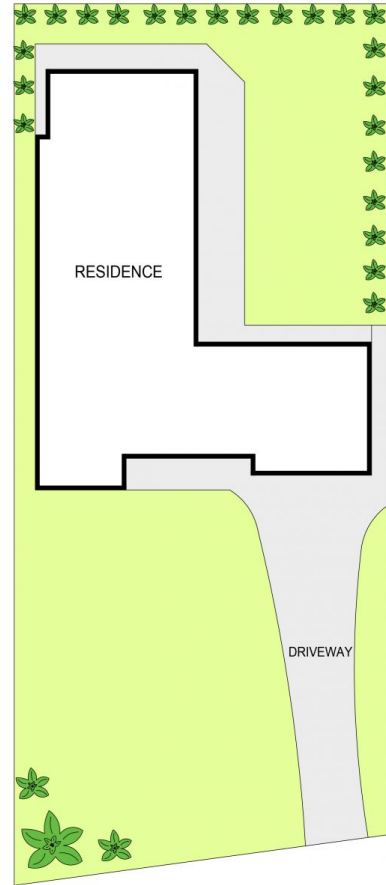
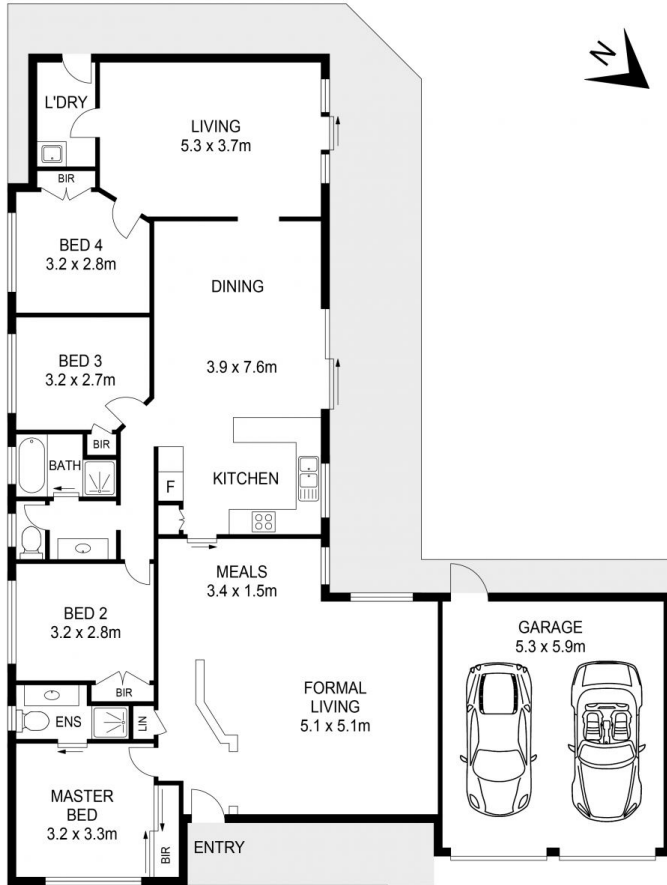
**Price** : \$ 2,030,000  
**Land Size** : 910 sqm  
**View** : <https://www.theavenurealestate.com.au/6686883>

**Featuring:**

- Updated entertainers kitchen with modern appliances and plenty of bench and storage space
- Large lounge room and adjoining dining room flooded with natural light
- Informal meals area off the kitchen and family room offering another entertaining and lounging space
- Generous master bedroom with ensuite bathroom and



**Chris De Celis**  
02 9634 3444



SITE PLAN

PLANS SHOWN ONLY INDICATIVE OF LAYOUT. DIMENSIONS ARE APPROXIMATE.

Measurements are approximate and not to scale. The vendor, agency and supplier will accept no liability for its accuracy for its accuracy. Interested parties are advised to make their own independent enquiries.

**10 MARK PLACE, CHERRYBROOK**