



147 Cecil Avenue Castle Hill NSW

4 2 3

Ideally located in the heart of Castle Hill and positioned on a 784m2 block, is this beautifully presented family home. Shared over three levels with multiple living areas it is perfect for the established or growing family. With an expansive timber deck seamlessly connecting the indoor with outdoor and with views overlooking the tranquil bushland setting, a home of this size and setting is much sought after.

Price : \$ 1,903,500
Land Size : 784 sqm
View : <https://www.theavenurealestate.com.au/6752758>

Featuring:

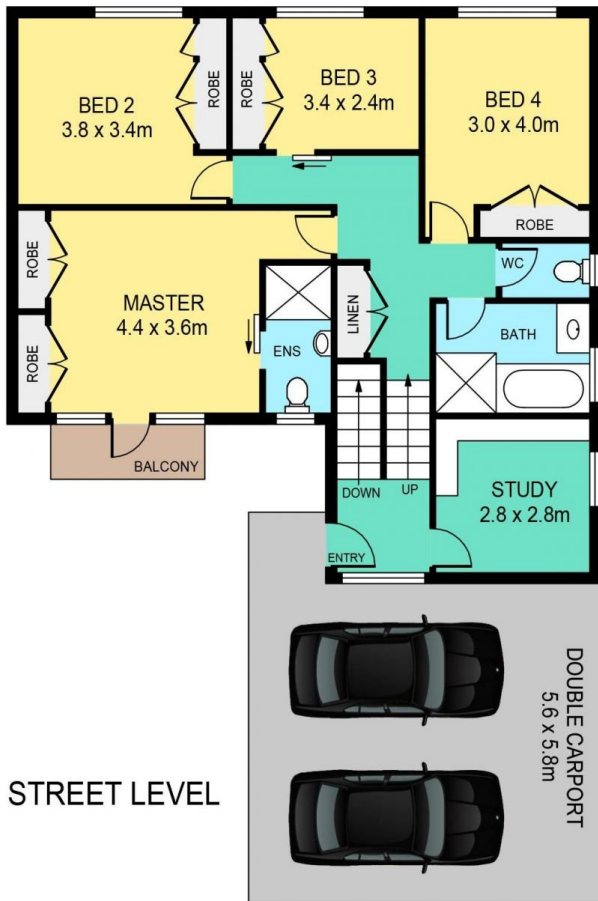
- Recently updated kitchen with 40mm stone benchtops, generous storage and overlooking the rear yard
- Open plan meals and family living with polished Cyprus pine timber flooring
- Generous main bedroom with ensuite, two built in robes and double doors which open to the balcony



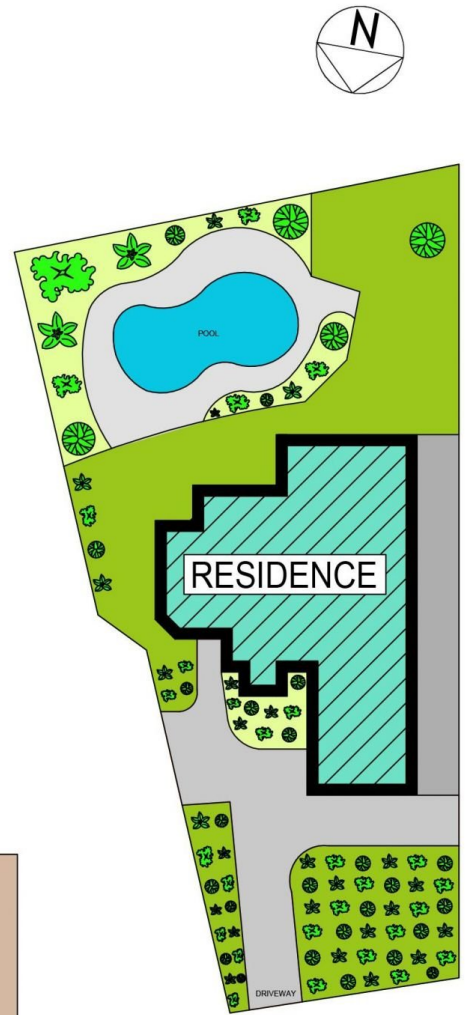
Steve Cole
02 9634 3444



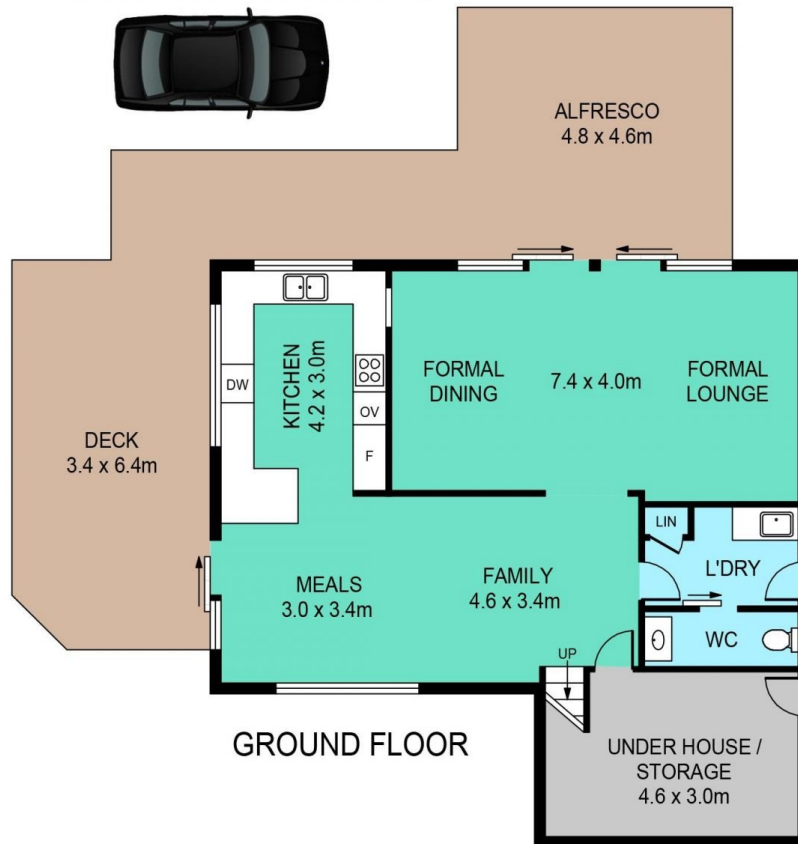
Chris De Celis
02 9634 3444



STREET LEVEL



SITE PLAN



GROUND FLOOR

147 CECIL AVENUE, CASTLE HILL

DISCLAIMER:

PLANS SHOWN ARE FOR MARKETING PURPOSES ONLY, ALL DIMENSIONS ARE APPROXIMATE AND NOT TO SCALE. THEY ARE SUBJECT TO ERRORS AND INACCURACIES AND NO LIABILITY WILL BE ACCEPTED. INTERESTED PARTIES SHOULD MAKE THEIR OWN INQUIRIES.

INTERNAL	179sqm
EXTERNAL	61sqm
CAR PORT	38sqm