



13 Skye Court Kellyville NSW

4 2 2

A home that promises an exceptional lifestyle in a premier locale puts the focus on family functionality at its best. Stylish and contemporary in design this immaculately presented family home is positioned in the sought after Duncraig Estate pocket. It embraces entertaining in style with a selection of formal and casual living areas with private rear garden with easy care lawn that is an ideal setting for relaxed outdoor living.

Featuring:

- Multiple living areas including open plan lounge and dining room
- Informal meals area off the kitchen and family room offering another entertaining and lounging space
- Generous master bedroom with ensuite bathroom and walk-in robe
- Three other bedrooms, all with built-in robes and central

Price : \$ 1,642,750

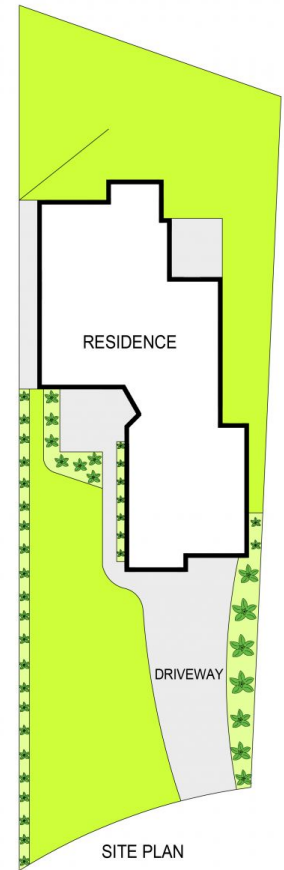
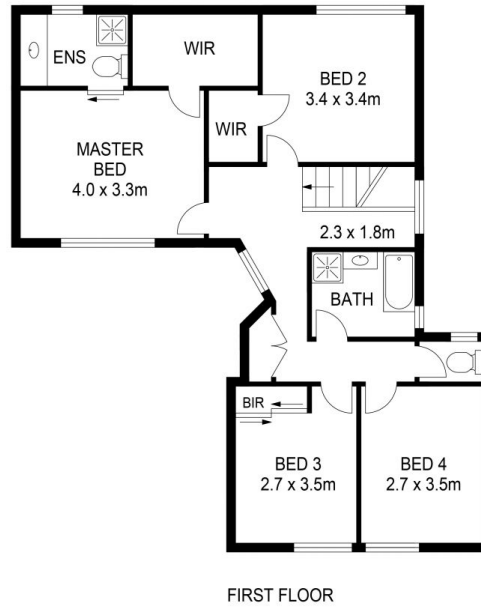
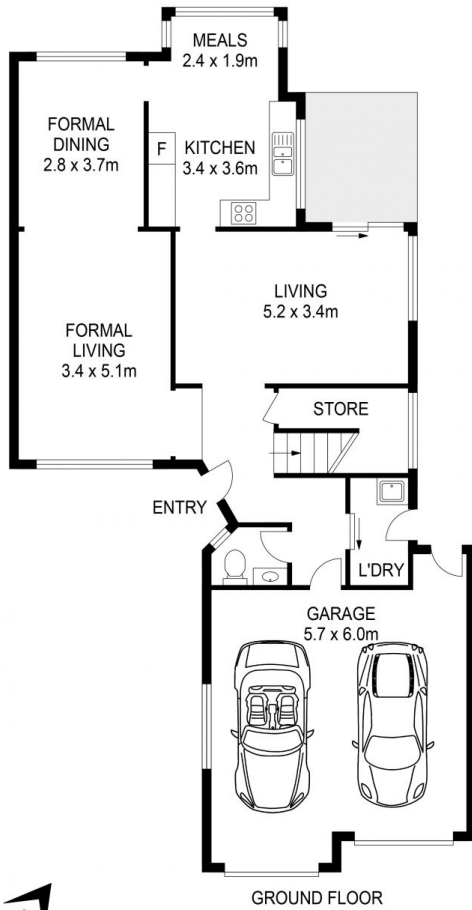
View : <https://www.theavenuerealestate.com.au/677759>
1



Sacha Bayat
02 9634 3444



Steve Cole
02 9634 3444



PLANS SHOWN ONLY INDICATIVE OF LAYOUT. DIMENSIONS ARE APPROXIMATE.

Measurements are approximate and not to scale. The vendor, agency and supplier will accept no liability for its accuracy for its accuracy. Interested parties are advised to make their own independent enquiries.

13 SKYE COURT, KELLYVILLE

THE
AVENUE
REAL ESTATE