



## 56 Turon Crescent The Ponds NSW

4 2 2

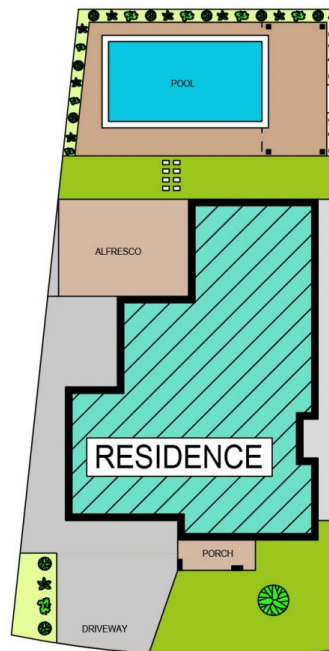
Perfectly positioned in a whisper-quiet street is this stunning Metricon family home. Spacious and with a very functional open plan living area downstairs, it's perfect for the growing family. The large modern kitchen with island benchtop and breakfast bar, connects with both the meals and family living areas. The timber and glass stacker doors seamlessly reveal the large outdoor alfresco entertaining area, which with the sparkling saltwater inground pool creates the perfect blend of indoor and outdoor living.

The upstairs accommodation includes a master suite with huge walk-in robe, ensuite with dual sink vanity and balcony for that morning coffee. The three additional generous -sized bedrooms all also having walk-in robes. Completing this area is a huge rumpus room, a perfect solution for the kids to chill out with their games or stream the latest movie.

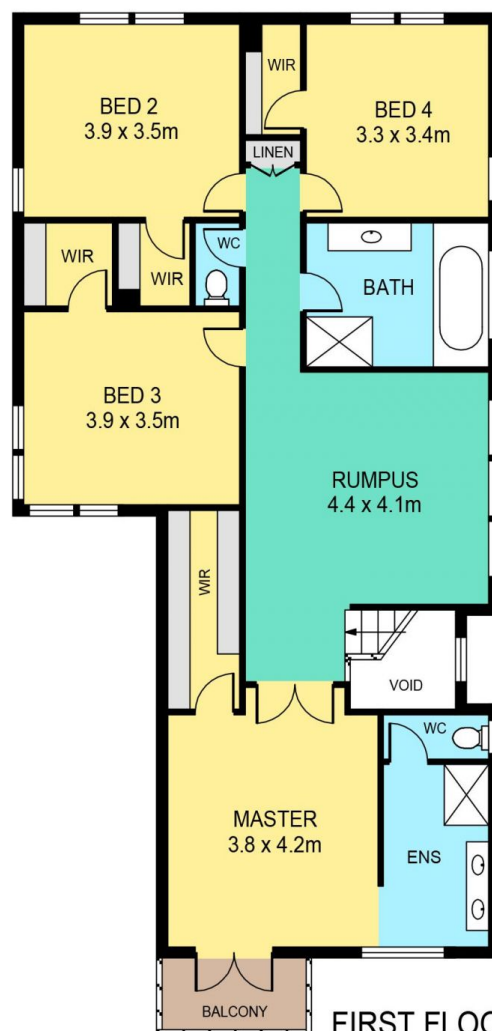
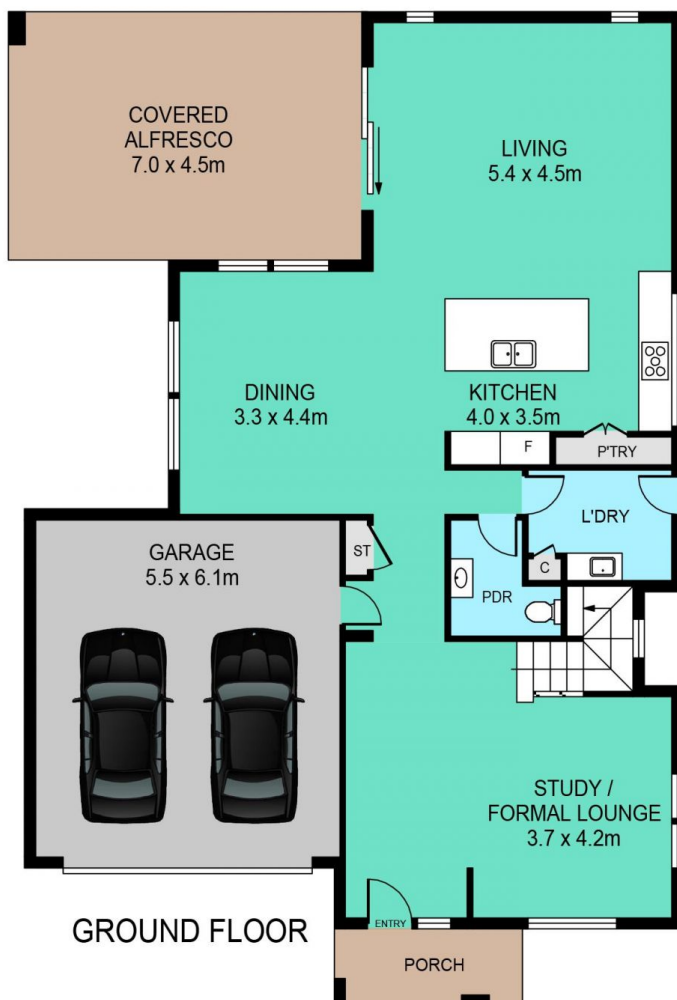
**Price** : \$ 1,745,000  
**Land Size** : 482 sqm  
**View** : <https://www.theavenuerealestate.com.au/6855167>



**Steve Cole**  
**02 9634 3444**



SITE PLAN



## 56 TURON CRESCENT, THE PONDS

### DISCLAIMER:

PLANS SHOWN ARE FOR MARKETING PURPOSES ONLY, ALL DIMENSIONS ARE APPROXIMATE AND NOT TO SCALE. THEY ARE SUBJECT TO ERRORS AND INACCURACIES AND NO LIABILITY WILL BE ACCEPTED. INTERESTED PARTIES SHOULD MAKE THEIR OWN INQUIRIES.

INTERNAL	223sqm
EXTERNAL	39sqm
GARAGE	33sqm