



40 Chepstow Drive Castle Hill NSW

4 3 2

Maintained beautifully, this residence has been fastidiously cared for with the highest attention to details by the original house-proud owners. As you lay eyes on the manicured front garden, you get a good feel of what to expect to see inside.

Price : \$ 2,000,000
Land Size : 782 sqm
View : <https://www.theavenuerealestate.com.au/6991251>

Offering multiple living spaces, including the upstairs rumpus room, with easy-flow configuration, this is a perfect family home, offering practicality. As a measure of extra comfort, all the windows are double-glazed.

The master bedroom comes with timber flooring, his and hers fully fitted walk-in wardrobes and spacious renovated ensuite.

- Media room, study and shower downstairs
- Tastefully landscaped backyard and covered alfresco



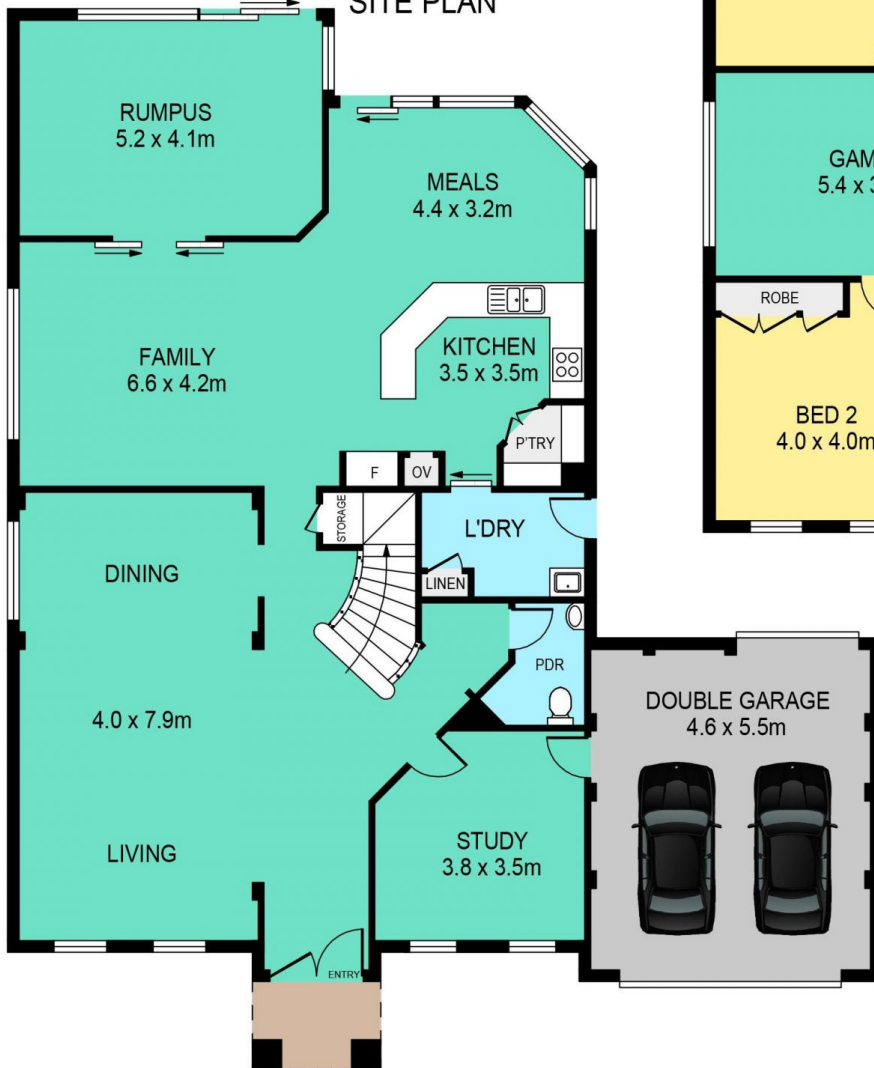
Soha Soheili
02 9634 3444



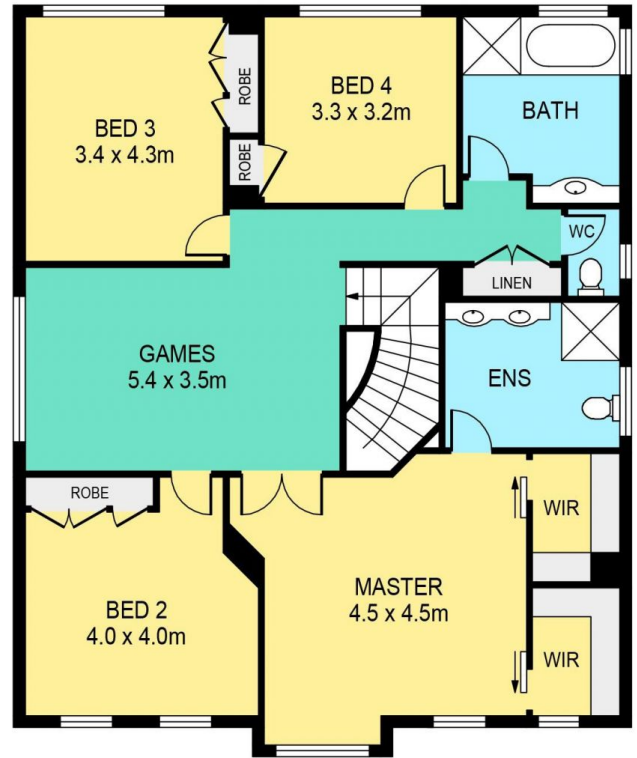
Chris De Celis
02 9634 3444



SITE PLAN



GROUND FLOOR



FIRST FLOOR

40 CHEPSTOW DRIVE, CASTLE HILL

DISCLAIMER:

PLANS SHOWN ARE FOR MARKETING PURPOSES ONLY, ALL DIMENSIONS ARE APPROXIMATE AND NOT TO SCALE. THEY ARE SUBJECT TO ERRORS AND INACCURACIES AND NO LIABILITY WILL BE ACCEPTED. INTERESTED PARTIES SHOULD MAKE THEIR OWN INQUIRIES.

INTERNAL	303sqm
EXTERNAL	24sqm
GARAGE	33sqm