



22/23 Regent Honeyeater Grove North Kellyville NSW

2 2 2

Located in The Grove, Greygum Estate is this oversized two bedroom apartment featuring bright open plan living, stylish fittings and fixtures and a wrap-around balcony, perfect for entertaining and relaxing.

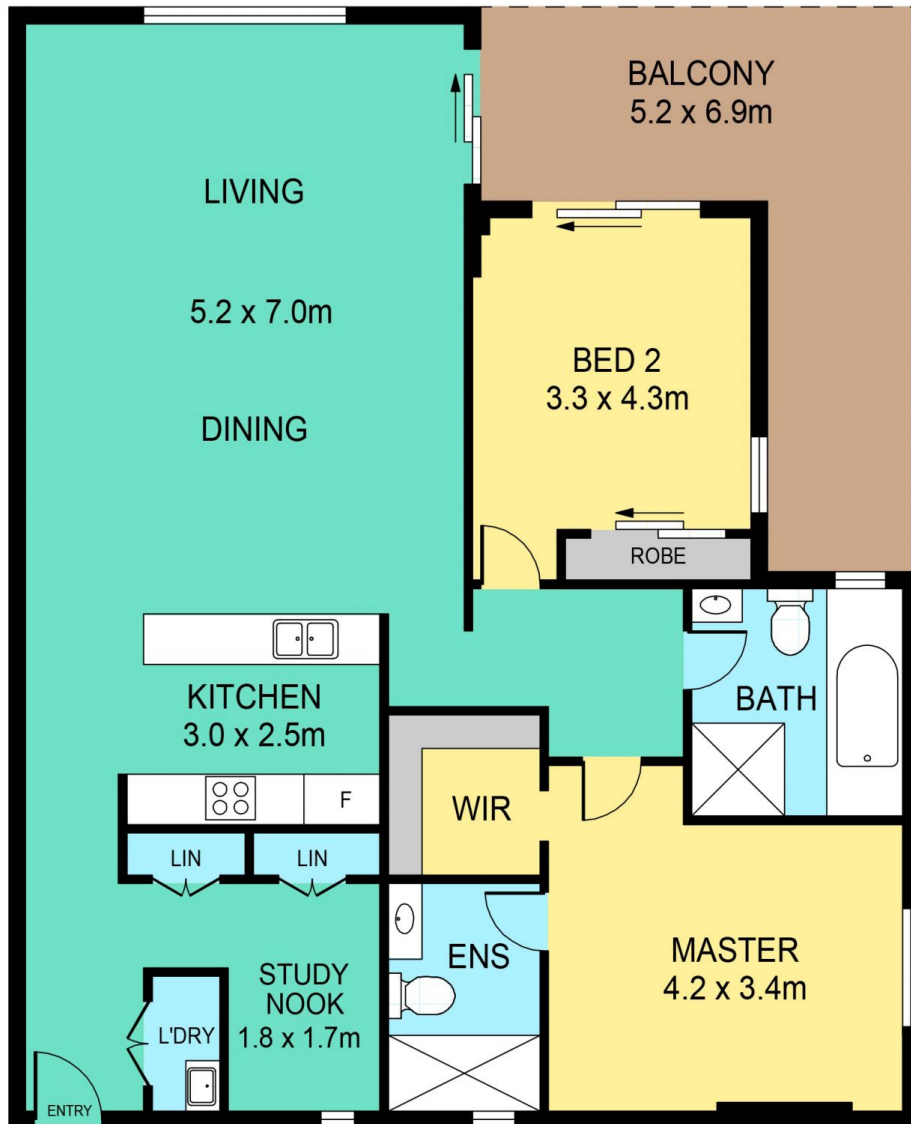
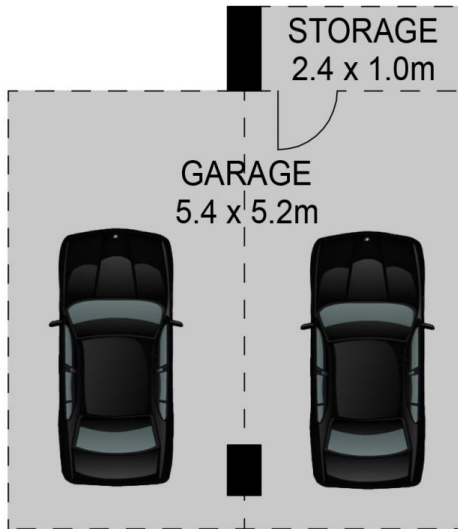
View : <https://www.theavenurealestate.com.au/7032917>

Featuring:

- Stylish kitchen with stainless steel appliances including dishwasher & gas cooking, stone waterfall benchtops and feature stone splashback
- Large master bedroom with generous walk in robe and ensuite bathroom
- Second bedroom with built in robe and access to the balcony
- Open plan lounge and dining room with lots of natural light and sliding doors to the outdoor entertaining area
- Spacious main bathroom with separate bath and shower, plus separate laundry room and dual linen cupboards



Chris De Celis
02 9634 3444



22/23 REGENT HONEYEATER GROVE, KELLYVILLE

DISCLAIMER:

PLANS SHOWN ARE FOR MARKETING PURPOSES ONLY, ALL DIMENSIONS ARE APPROXIMATE AND NOT TO SCALE. THEY ARE SUBJECT TO ERRORS AND INACCURACIES AND NO LIABILITY WILL BE ACCEPTED. INTERESTED PARTIES SHOULD MAKE THEIR OWN INQUIRIES.