



**27/12-18 Hume Avenue Castle Hill NSW**

2 2 2

Conveniently located in a boutique complex is this impressive, full-brick executive apartment. A rare find with a large 94 sqm external courtyard and double garage, this ground floor apartment feels spacious and inviting. Only a short walk to Castle Towers, Metro Train and City bus links, it offers a well-connected lifestyle in the heart of Castle Hill.

**Price** : \$ 905,000  
**Building Size** : 115 sqm  
**View** : <https://www.theavenurealestate.com.au/7199873>

**Featuring:**

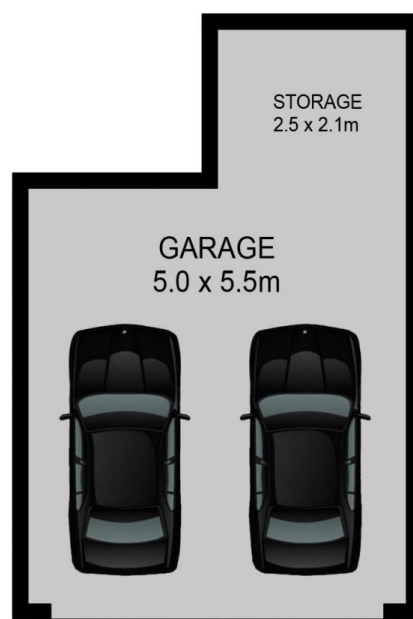
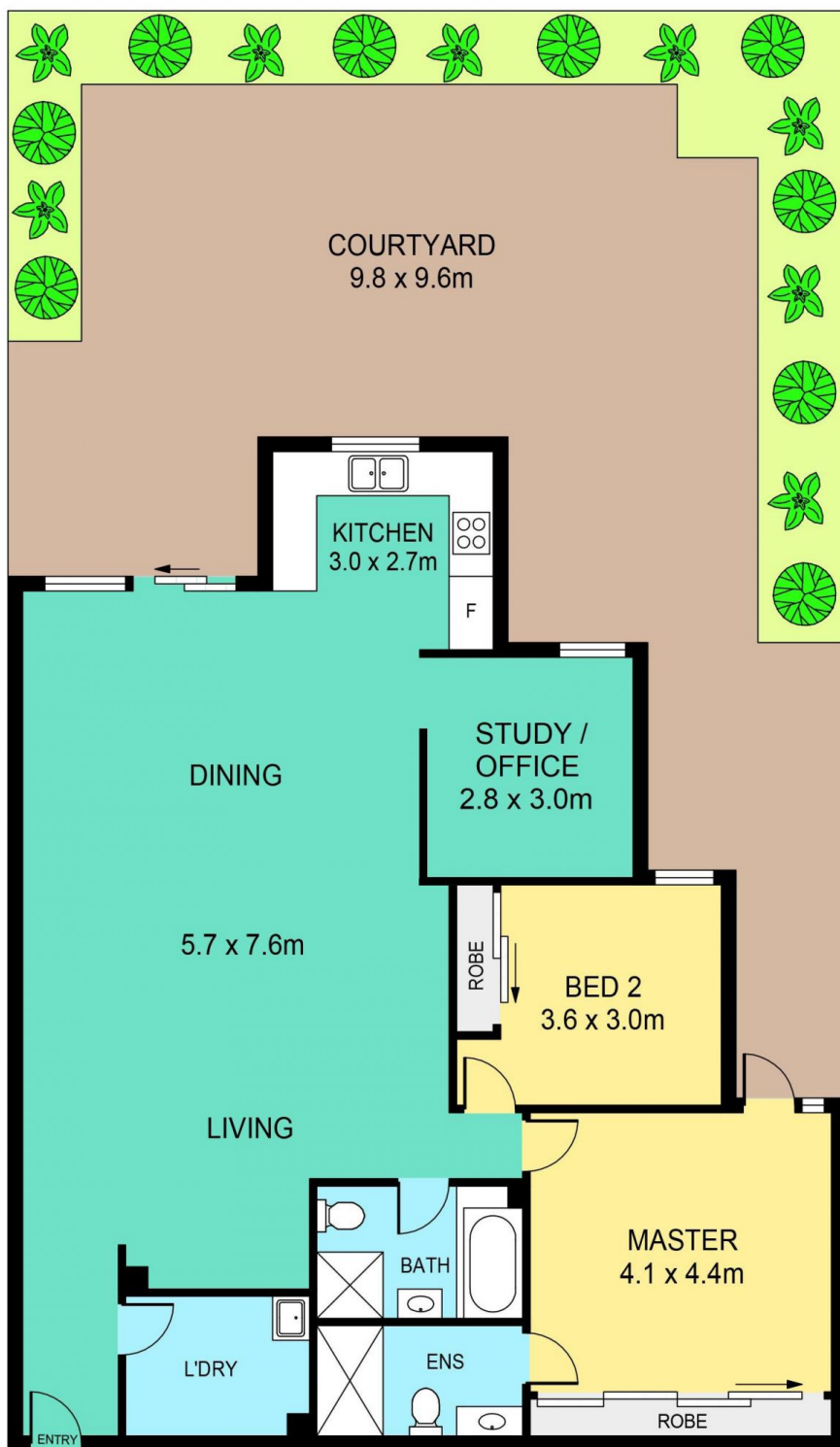
- Flexible floorplan, offering two generous bedrooms plus a third bedroom or home office.
- Large open plan lounge and dining room and modern kitchen with stainless steel appliances, stone benchtops and ample storage.
- Oversized, paved courtyard perfect for entertaining and surrounded by mature hedges, lush landscaping and stone retaining wall.



**Chris De Celis**  
02 9634 3444



**Steve Cole**  
02 9634 3444



## 27/12-18 HUME AVENUE, CASTLE HILL

**DISCLAIMER:**

PLANS SHOWN ARE FOR MARKETING PURPOSES ONLY, ALL DIMENSIONS ARE APPROXIMATE AND NOT TO SCALE. THEY ARE SUBJECT TO ERRORS AND INACCURACIES AND NO LIABILITY WILL BE ACCEPTED. INTERESTED PARTIES SHOULD MAKE THEIR OWN INQUIRIES.

INTERNAL	115sqm
EXTERNAL	94sqm
GARAGE	32sqm