



4 Grandview Court Bella Vista NSW

4 3 2

Rarely ever will you find this combination in a house; a large block, Matthew Pearce catchment with renovations. Built on a massive 880m2 block, this house offers everything a family desires. Offering multiple living areas, including a mezzanine on the first level and a spacious rumpus room downstairs, a family can easily spread around.

The outdoor is comprised of an oversized covered entertaining area, solar-heated swimming pool, large grassed play area for kids with potential to build a granny flat (STCA) for your in-laws or to earn rental income.

Features:

- Master bedroom with ensuite and walk-in wardrobe
- Fully renovated kitchen with 5-burner gas cooktop and

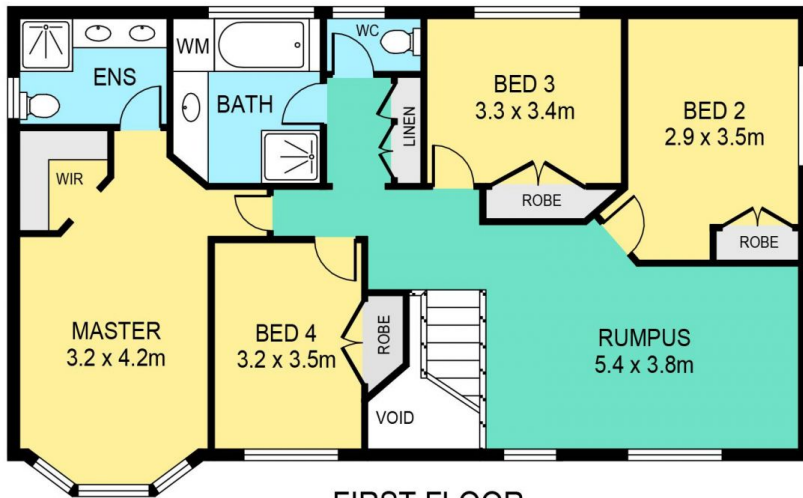
Price : \$ 2,325,000
Land Size : 880 sqm
View : <https://www.theavenurealestate.com.au/7230325>



Soha Soheili
02 9634 3444



Sherry Soheili
0406 048 133



FIRST FLOOR



SITE PLAN



GROUND FLOOR

4 GRAND VIEW COURT, BELLA VISTA

DISCLAIMER:

PLANS SHOWN ARE FOR MARKETING PURPOSES ONLY, ALL DIMENSIONS ARE APPROXIMATE AND NOT TO SCALE. THEY ARE SUBJECT TO ERRORS AND INACCURACIES AND NO LIABILITY WILL BE ACCEPTED. INTERESTED PARTIES SHOULD MAKE THEIR OWN INQUIRIES.