



22/23 Regent Honeyeater Grove North Kellyville NSW

2 2 2

This highly sought-after apartment block, The Grove, in Greygum Estate is not just a place to live in, it's a lifestyle.

This oversized two-bedroom apartment offers a bright, open plan living, stylish fittings and fixtures and a wraparound balcony, perfect for entertaining. From the prominent position of this apartment, relax and enjoy your coffee in the balcony or your living room, overlooking the beautifully landscaped common area and the swimming pool in an absolute whisper quiet surround.

Features:

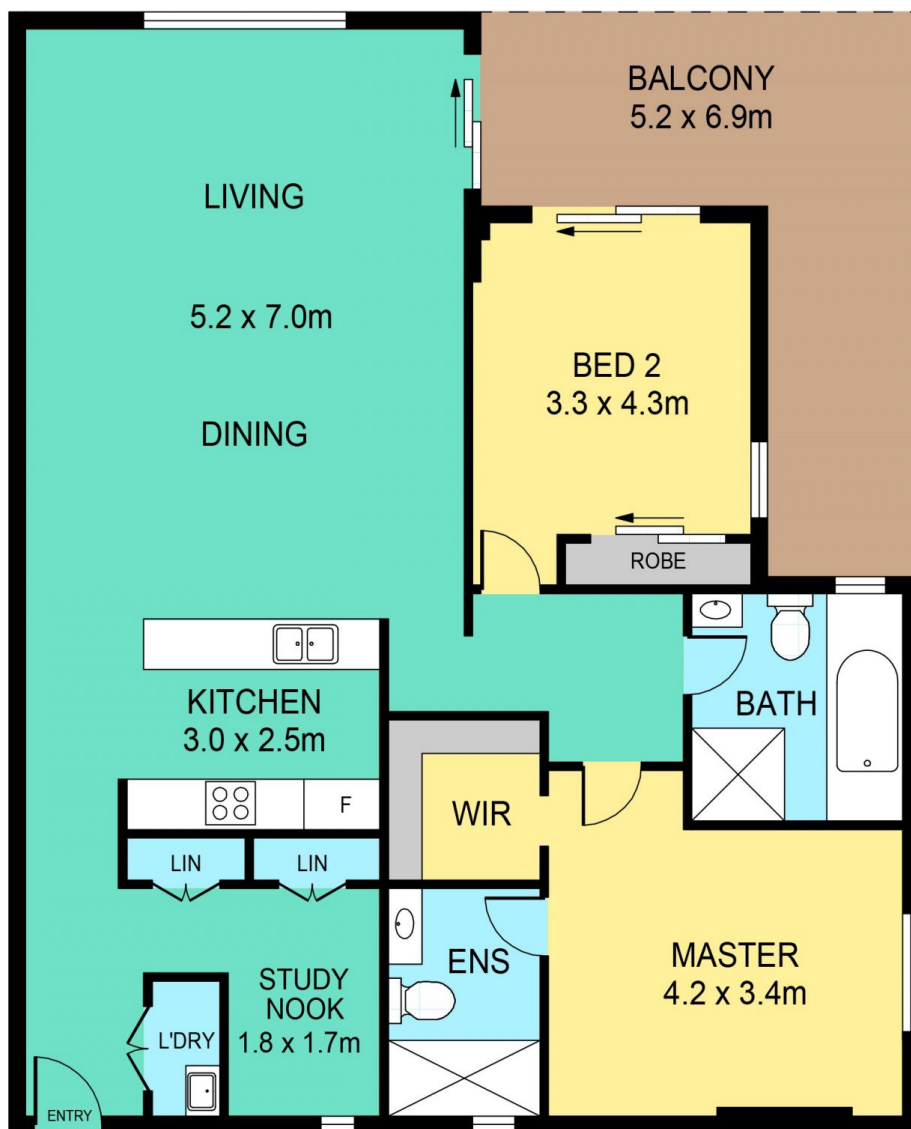
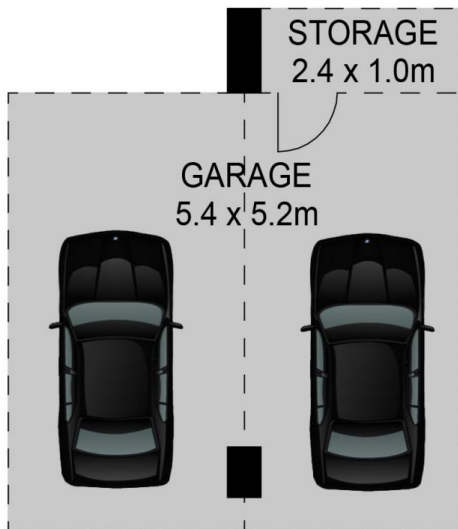
- Stylish kitchen with stainless steel appliances, stone waterfall benchtops and splashback
- Large master bedroom with generous size walk-in robe and ensuite
- Second bedroom with built in robe and access to the

Price : \$ 885,000

View : <https://www.theavenuerealestate.com.au/7515369>



Soha Soheili
02 9634 3444



22/23 REGENT HONEYEATER GROVE, KELLYVILLE

DISCLAIMER:

PLANS SHOWN ARE FOR MARKETING PURPOSES ONLY, ALL DIMENSIONS ARE APPROXIMATE AND NOT TO SCALE. THEY ARE SUBJECT TO ERRORS AND INACCURACIES AND NO LIABILITY WILL BE ACCEPTED. INTERESTED PARTIES SHOULD MAKE THEIR OWN INQUIRIES.

THE
AVENUE
REAL ESTATE