



84/23 Regent Honeyeater Grove North Kellyville NSW

2 2 2

Welcome to The Grove, an exclusive apartment block nestled within the prestigious Greygum Estate. This highly sought-after address is more than just a place to live; it offers a lifestyle that blends comfort, style, and tranquility.

Step into this exquisite two-bedroom, east-facing apartment and experience the charm of open-plan living accentuated by tasteful fittings and fixtures. The living room opens to a spacious balcony, overlooking a lush reserve, providing an oasis of peace and quiet.

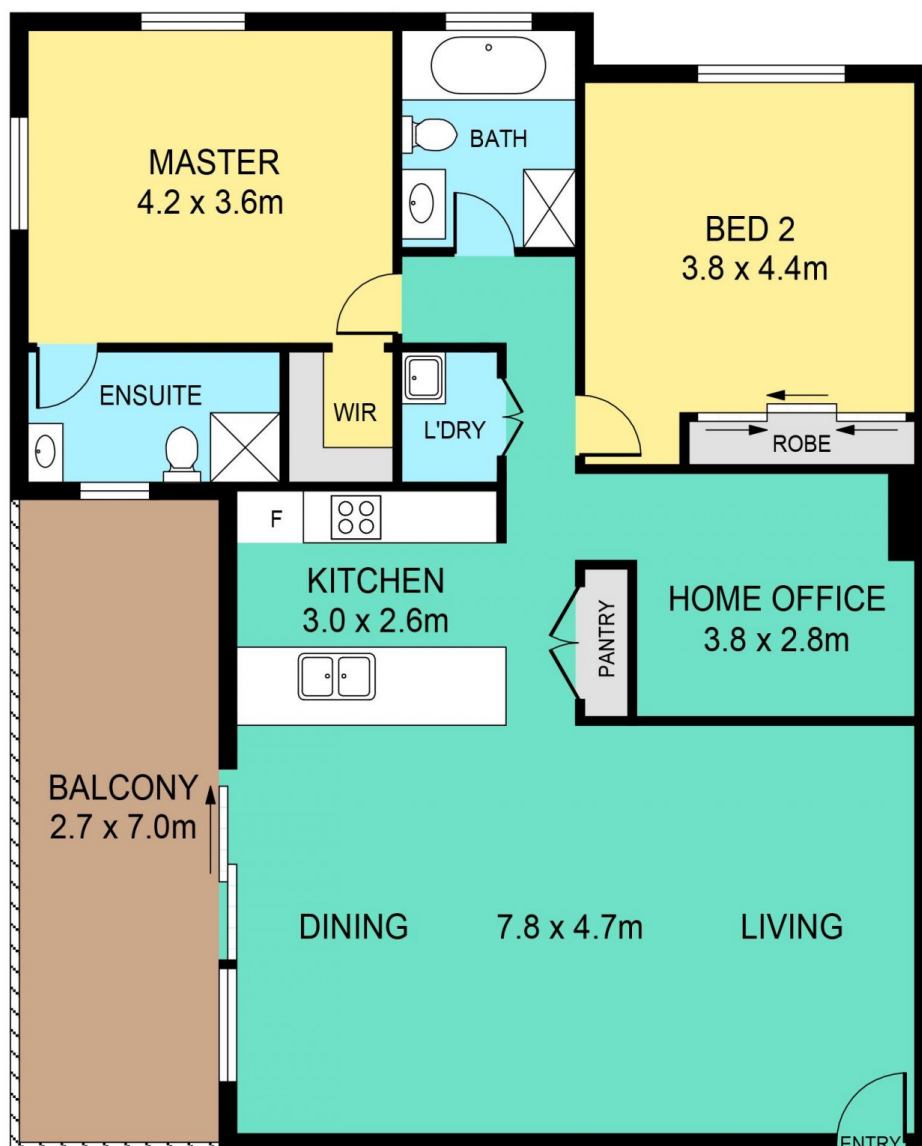
This apartment boasts a stylish kitchen adorned with stainless steel appliances, stone waterfall benchtops, and a contemporary splashback. The master bedroom impresses with its size and features a walk-in robe and ensuite. The lounge and dining area are bathed in natural light, seamlessly connecting to the veranda, which boasts a

Price : \$ 870,000

View : <https://www.theavenuerealestate.com.au/7675635>



Soha Soheili
02 9634 3444



84/23 REGENT HONEYEATER GROVE, NORTH KELLYVILLE

DISCLAIMER:

PLANS SHOWN ARE FOR MARKETING PURPOSES ONLY. ALL DIMENSIONS ARE APPROXIMATE AND NOT TO SCALE. THEY ARE SUBJECT TO ERRORS AND INACCURACIES AND NO LIABILITY WILL BE ACCEPTED. INTERESTED PARTIES SHOULD MAKE THEIR OWN INQUIRIES.

INTERNAL	109sqm
EXTERNAL	17sqm
GARAGE	28sqm