



3 Ripley Glade Bella Vista NSW

5 3 2

Positioned in a quiet and leafy cul-de-sac is this large, family home exuding timeless appeal and classic style. From the federation-style facade, the established gardens and the stylish and beautifully maintained interiors, this property is surrounded by parklands and is a peaceful sanctuary.

Featuring:

- Updated kitchen with stone benchtops, shaker-profile joinery, Smeg dual wall oven and induction cooktop and generous pantry
- Stylish formal lounge room, open plan living and dining rooms, plus additional family room with built in joinery including climate-controlled wine fridges.
- Bi-fold doors lead out to the vine-covered alfresco area, offering the perfect spot to entertain and relax with family and friends

Price : \$ 2,553,000
Land Size : 792 sqm
View : <https://www.theavenurealestate.com.au/7740508>



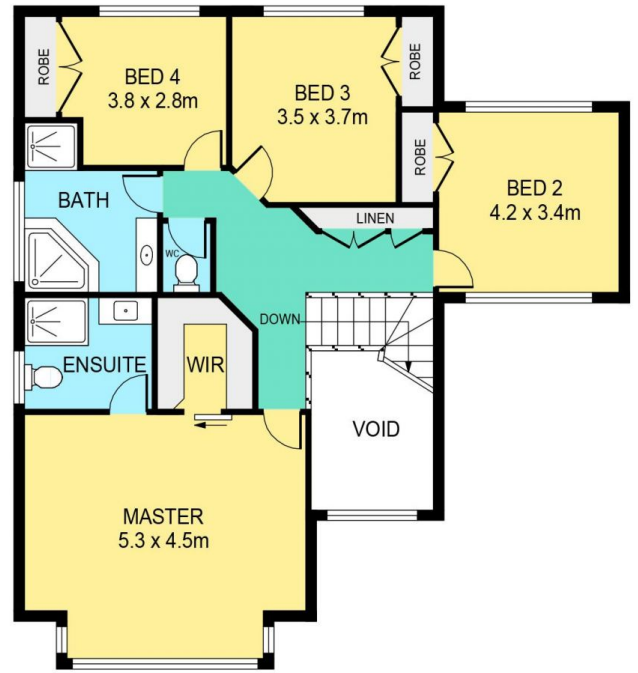
Chris De Celis
02 9634 3444



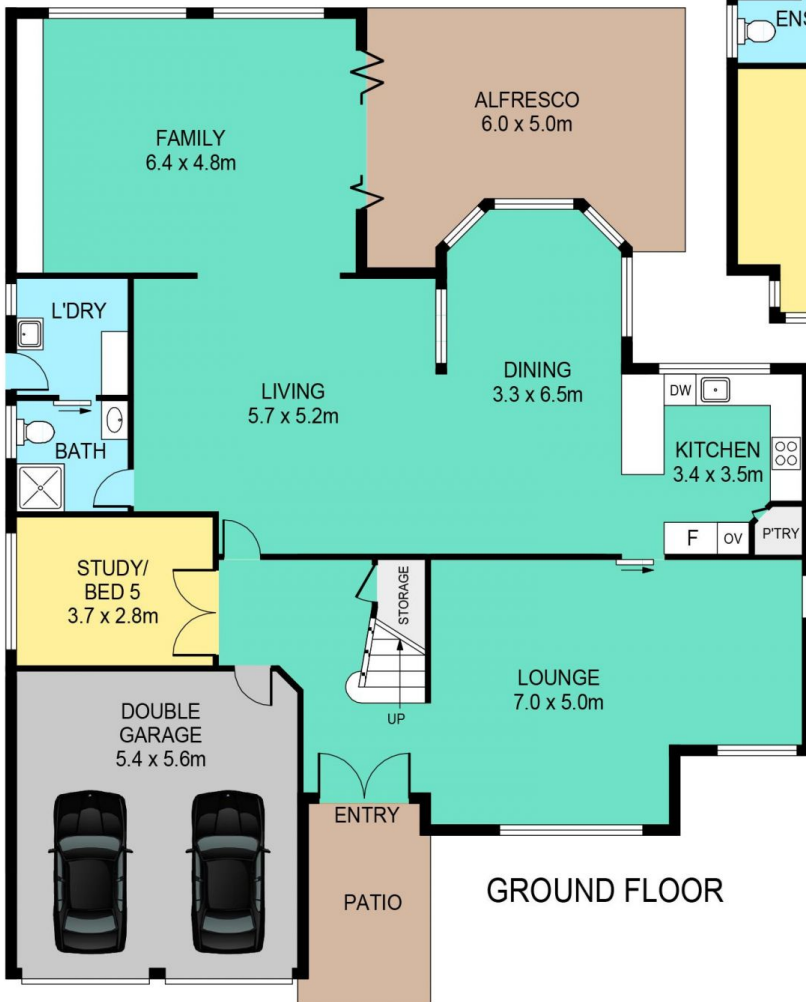
Soha Soheili
02 9634 3444



SITE PLAN



FIRST FLOOR



GROUND FLOOR

3 RIPLEY GLADE, BELLA VISTA

DISCLAIMER:

PLANS SHOWN ARE FOR MARKETING PURPOSES ONLY. ALL DIMENSIONS ARE APPROXIMATE AND NOT TO SCALE. THEY ARE SUBJECT TO ERRORS AND INACCURACIES AND NO LIABILITY WILL BE ACCEPTED. INTERESTED PARTIES SHOULD MAKE THEIR OWN INQUIRIES.

INTERNAL	257sqm
EXTERNAL	34sqm
GARAGE	30sqm