



15 Linford Place Beaumont Hills NSW

4 2 2

Nestled in a cul-de-sac location, this 4-bedroom single level family home is perfectly suited for a young family or even downsizers. Set on a generous 560m² of land there's plenty of room for the kids to play and the family to entertain.

Recently fully renovated gas kitchen with an abundance of storage options is the hub of the home and connects seamlessly with the meals area and outdoor alfresco. Separate formal lounge and dining along with a rumpus / games room ensure there's many options for the whole family to enjoy.

Conveniently located within walking distance to the bus stop connecting you to Kellyville Metro Station, commuting is a breeze. Just minutes to Beaumont Hills Primary School and Beaumont Village shops nearby enhance the appeal of

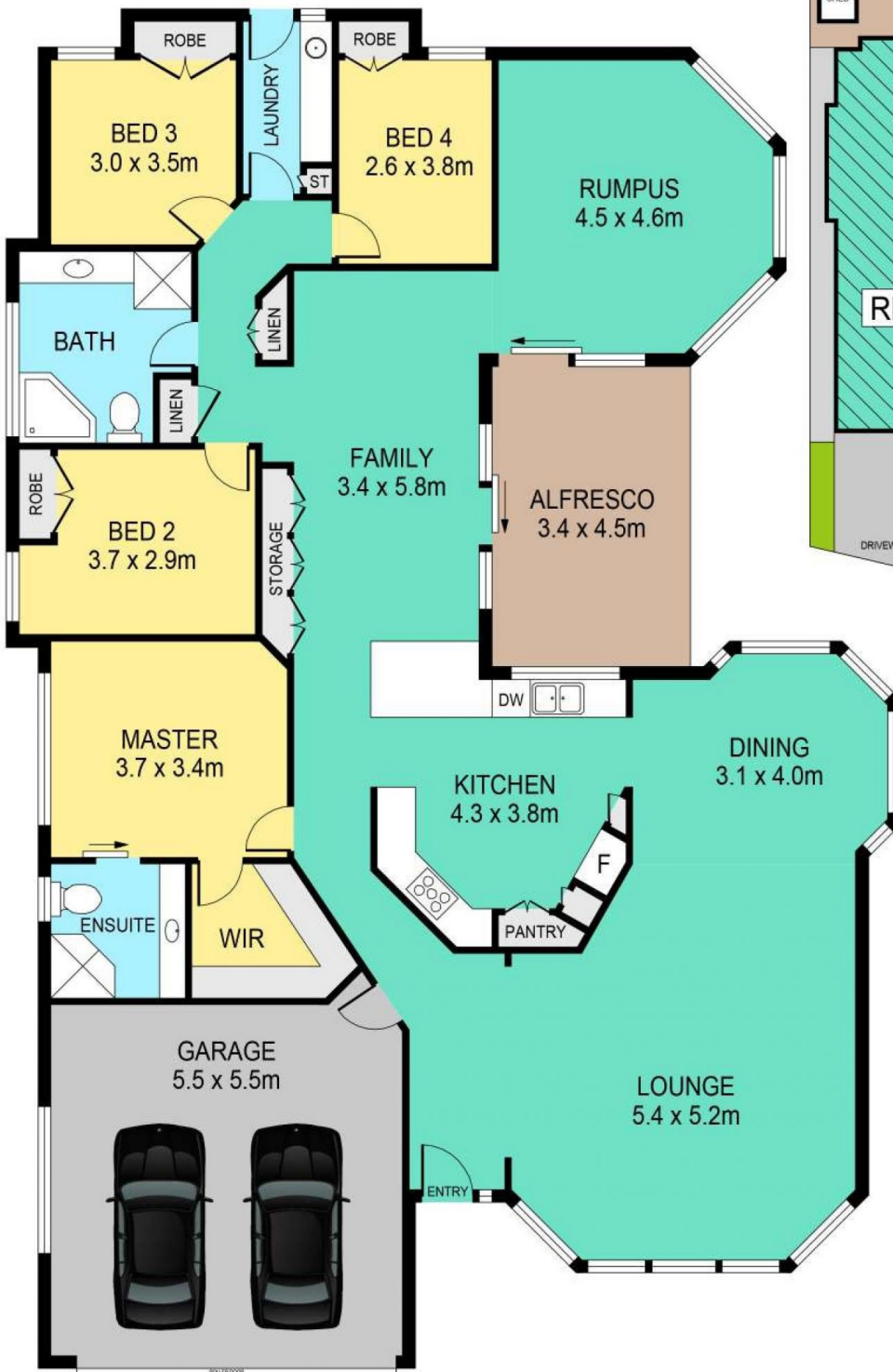
Land Size : 560 sqm
View : <https://www.theavenurealestate.com.au/7879648>



Steve Cole
02 9634 3444



Chris De Celis
02 9634 3444



SITE PLAN

15 LINFORD PLACE, BEAUMONT HILLS

DISCLAIMER:

PLANS SHOWN ARE FOR MARKETING PURPOSES ONLY. ALL DIMENSIONS ARE APPROXIMATE AND NOT TO SCALE. THEY ARE SUBJECT TO ERRORS AND INACCURACIES AND NO LIABILITY WILL BE ACCEPTED. INTERESTED PARTIES SHOULD MAKE THEIR OWN INQUIRIES.