



6 Parsons Circuit Kellyville NSW

5 🛏 3 🚿 3 🚗

Welcome to 6 Parsons Circuit, Kellyville. A statement Provincial Homes custom-build that showcases a relaxed, coastal style, with stylish design elements, luxurious finishes and a glorious outdoor entertaining area overlooking the sparkling in-ground mineral swimming pool.

Price : \$ 3,267,000
Building Size : 445 sqm
Land Size : 739.4 sqm
View : <https://www.theavenurealestate.com.au/7942539>

A balance of cool colours and large windows provide a light and bright feel to the abundant internal living spaces. The brick and stone façade with a steeply pitched roof and commanding 25m street frontage create a wonderful street-scape.

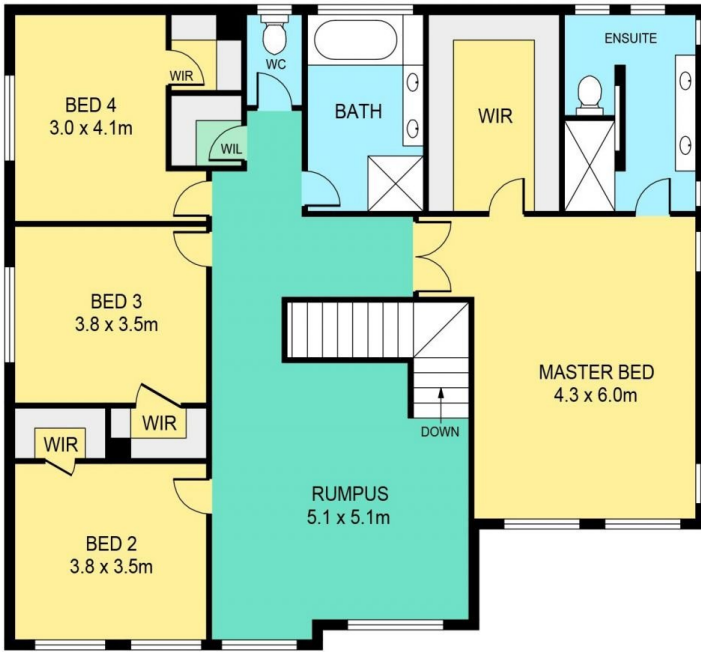
- Featuring:
- Open floor plan that seamlessly transitions between indoor and outdoor living spaces
 - Expansive kitchen with wraparound stone island bench,



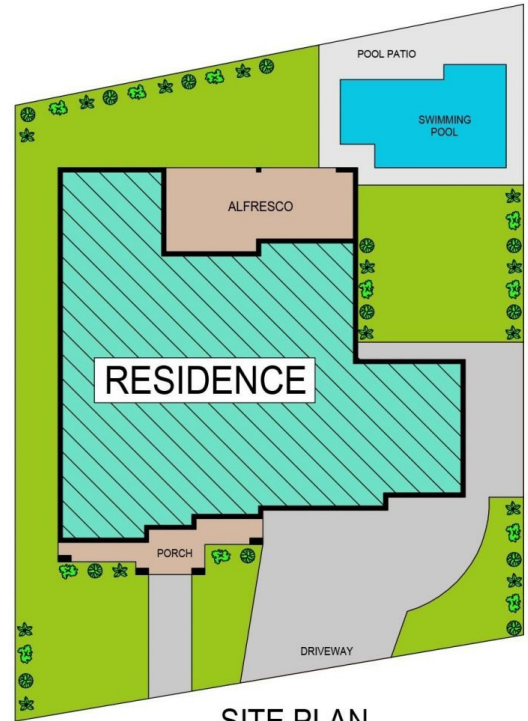
Chris De Celis
02 9634 3444



Soha Soheili
02 9634 3444



FIRST FLOOR



SITE PLAN



GROUND FLOOR

6 PARSONS CIRCUIT, KELLYVILLE

DISCLAIMER:

PLANS SHOWN ARE FOR MARKETING PURPOSES ONLY. ALL DIMENSIONS ARE APPROXIMATE AND NOT TO SCALE. THEY ARE SUBJECT TO ERRORS AND INACCURACIES AND NO LIABILITY WILL BE ACCEPTED. INTERESTED PARTIES SHOULD MAKE THEIR OWN INQUIRIES.

INTERNAL	340sqm
EXTERNAL	45sqm
GARAGE	60sqm