



30 Willcox Crescent Kellyville NSW

5 3 2

Elegantly appointed and perfectly positioned amongst high calibre homes, this stunning residence with two master bedrooms, each on a separate level, is ideal for multi-generational family. Be impressed upon entry by the palatial foyer with the designer chandelier, complemented by the solid timber stairway.

Type : House
Price : \$ 3,050,000
Land Size : 700 sqm
View : <https://www.theavenurealestate.com.au/8052116>

The residence includes versatile living areas with high ceilings and an expansive upstairs rumpus room. The gourmet kitchen is fitted with stainless-steel appliances, breakfast bar, walk-in pantry, waterfall Caesarstone bench-tops, and ample storage. All bedrooms are generous in size, all with built-ins and master bedrooms with walk-in wardrobe and ensuite.

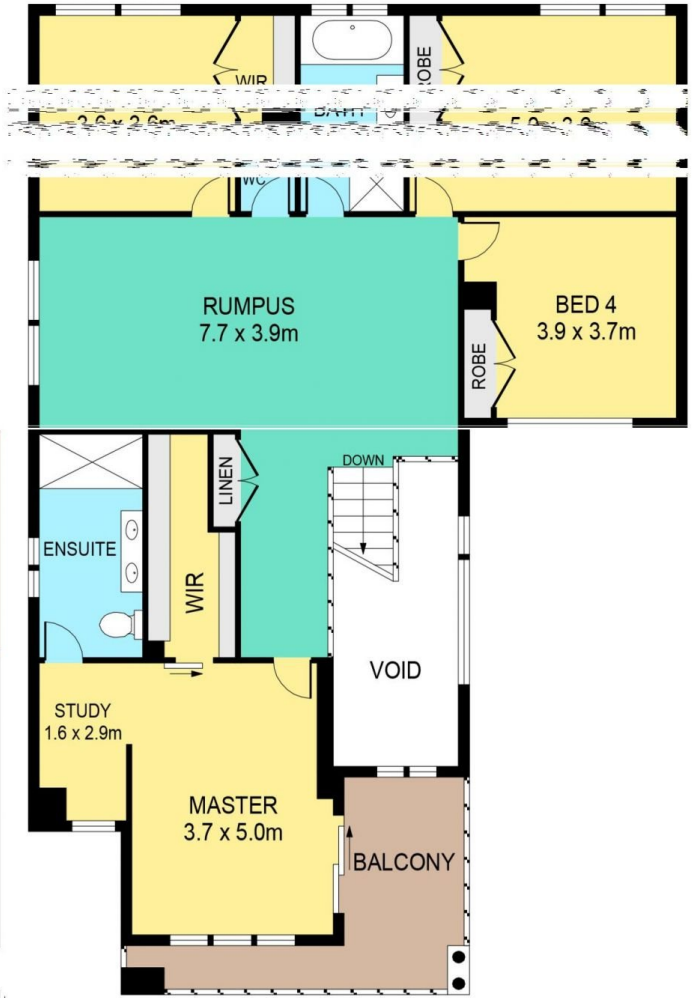


Soha Soheili
02 9634 3444

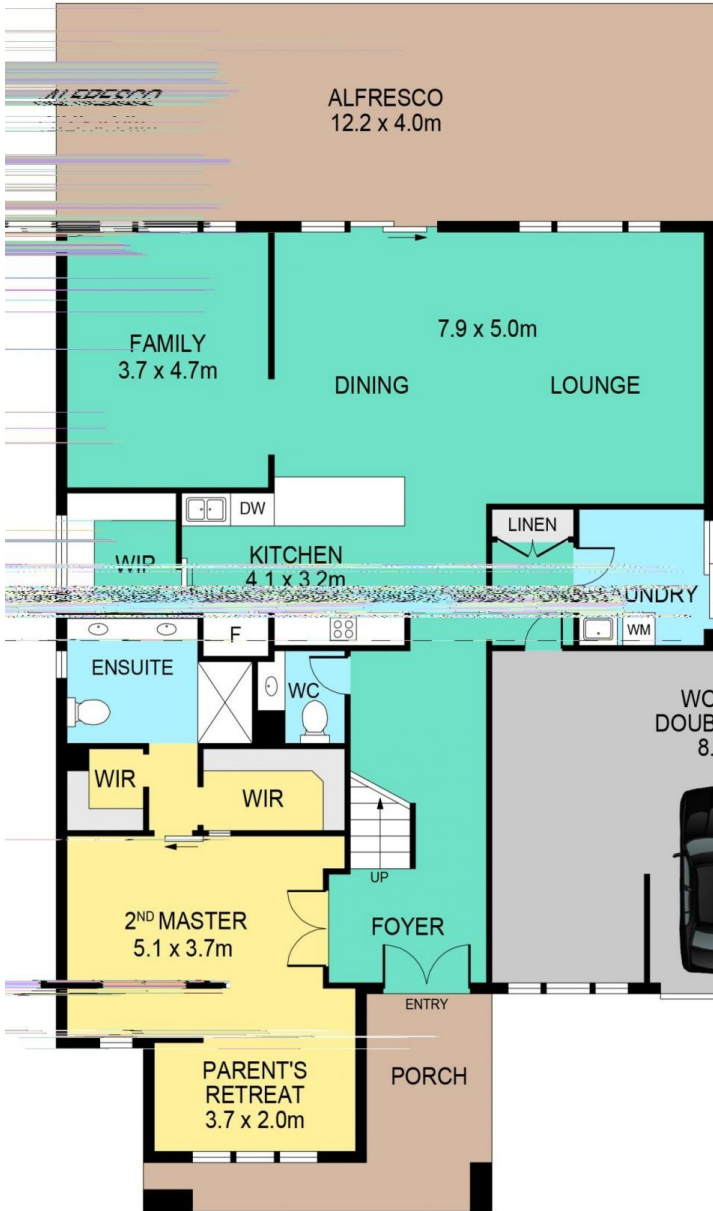


Sherry Soheili
02 9634 3444

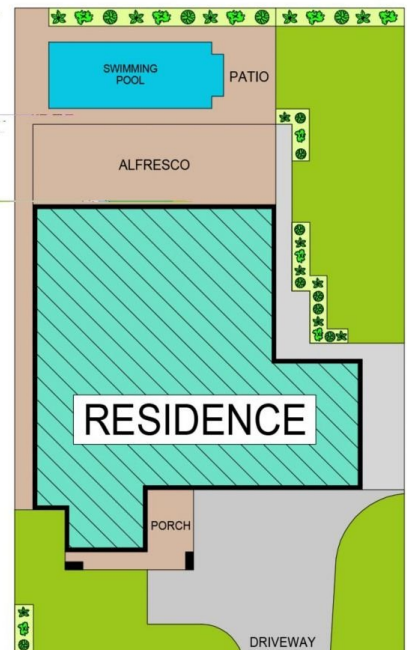
[For full version visit the website](https://www.theavenurealestate.com.au)



FIRST FLOOR



GROUND FLOOR



SITE PLAN

30 WILCOX CRESCENT, KELLYVILLE

DISCLAIMER:

THIS DOCUMENT IS FOR INFORMATION PURPOSES ONLY. ALL DIMENSIONS ARE APPROXIMATE AND NOT TO SCALE. THE ARCHITECT ACCEPTS NO LIABILITY FOR ANY INACCURACIES AND NO LIABILITY WILL BE ACCEPTED. INTERESTED PARTIES SHOULD MAKE THEIR OWN INQUIRIES.